

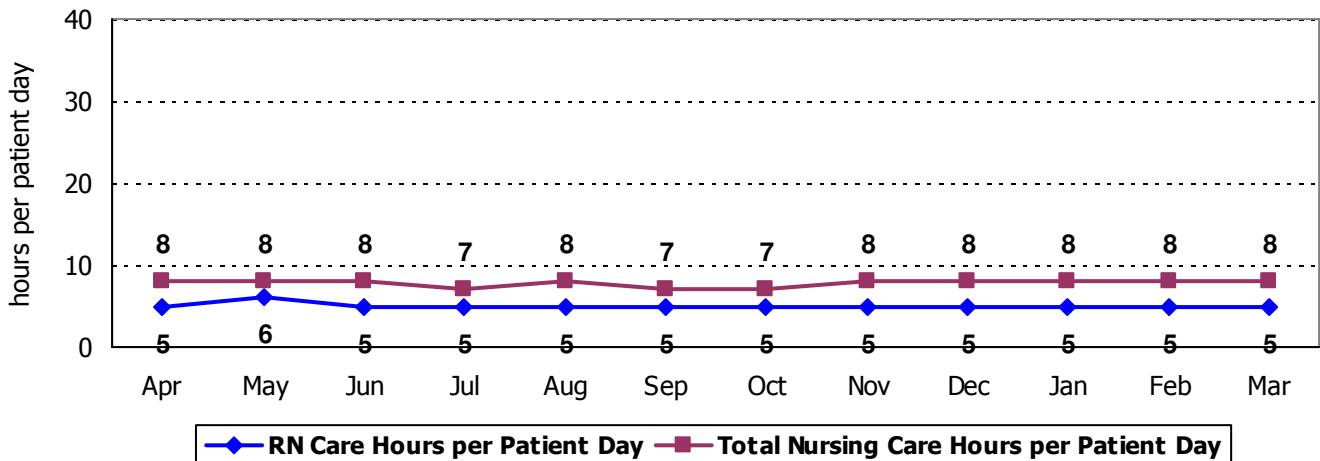
2009 Hospital Report Card Nurse Staffing Data
Rutland Regional Medical Center

RUTLAND REGIONAL MEDICAL CENTER – MEDICAL/SURGICAL UNIT (5TH FLOOR)

The 5th Floor at Rutland Regional Medical Center has 32 licensed beds and cares for adult patients. Types of services provided in this setting include: care of people with general medical and surgical problems and care of people with cancer.

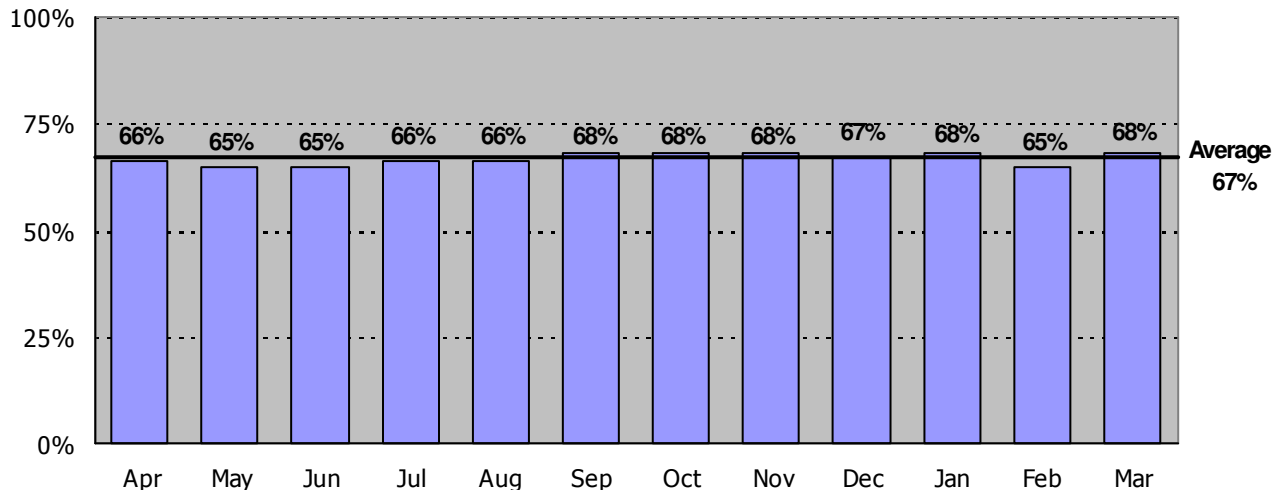
Nursing Care Hours per Patient Day: April 2008 - March 2009

The following graph shows the average number of direct nursing care hours provided per patient during a 24-hour period. Results are shown for each month, for care provided by registered nurses and by all nursing staff.



Percent of Total Nursing Care Hours Provided by RNs: April 2008 - March 2009

The following graph shows the percentage of total nursing hours provided by registered nurses, including the average for this unit.



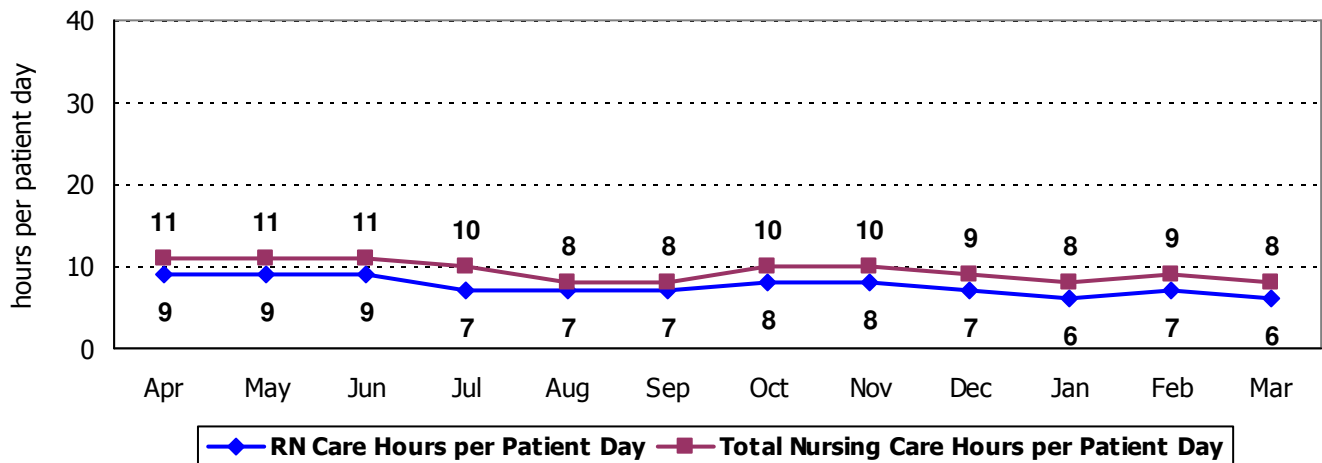
2009 Hospital Report Card Nurse Staffing Data
Rutland Regional Medical Center

RUTLAND REGIONAL MEDICAL CENTER – MEDICAL/SURGICAL UNIT (3RD NORTH)

Unit 3 North at Rutland Regional Medical Center has 10 licensed beds and cares for adult patients. Types of services provided in this setting may include: care of people with general medical and surgical problems, and heart monitoring.

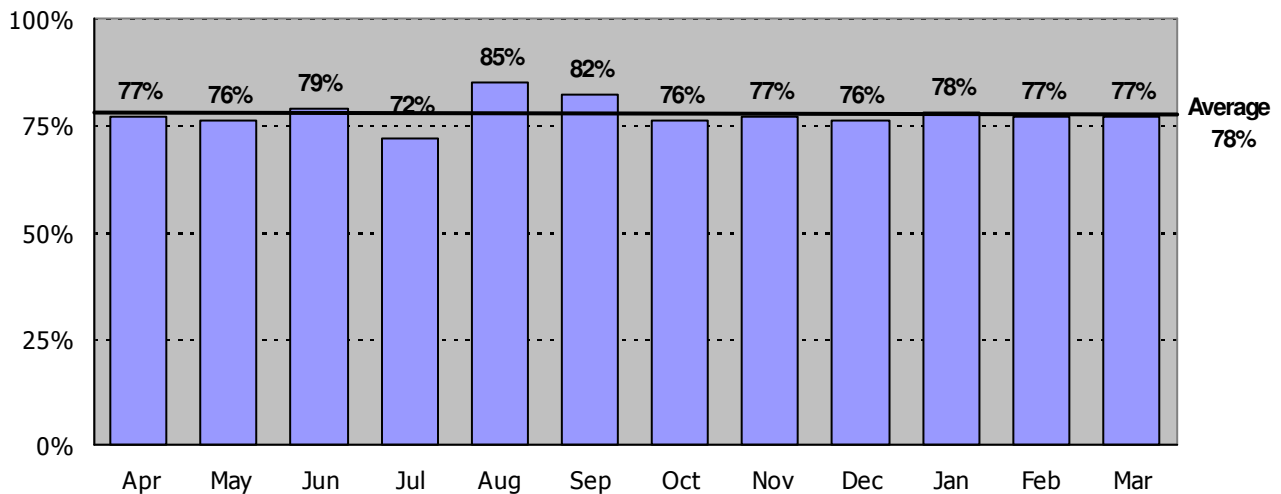
Nursing Care Hours per Patient Day: April 2008 - March 2009

The following graph shows the average number of direct nursing care hours provided per patient during a 24-hour period. Results are shown for each month, for care provided by registered nurses and by all nursing staff.



Percent of Total Nursing Care Hours Provided by RNs: April 2008 - March 2009

The following graph shows the percentage of total nursing hours provided by registered nurses, including the average for this unit.



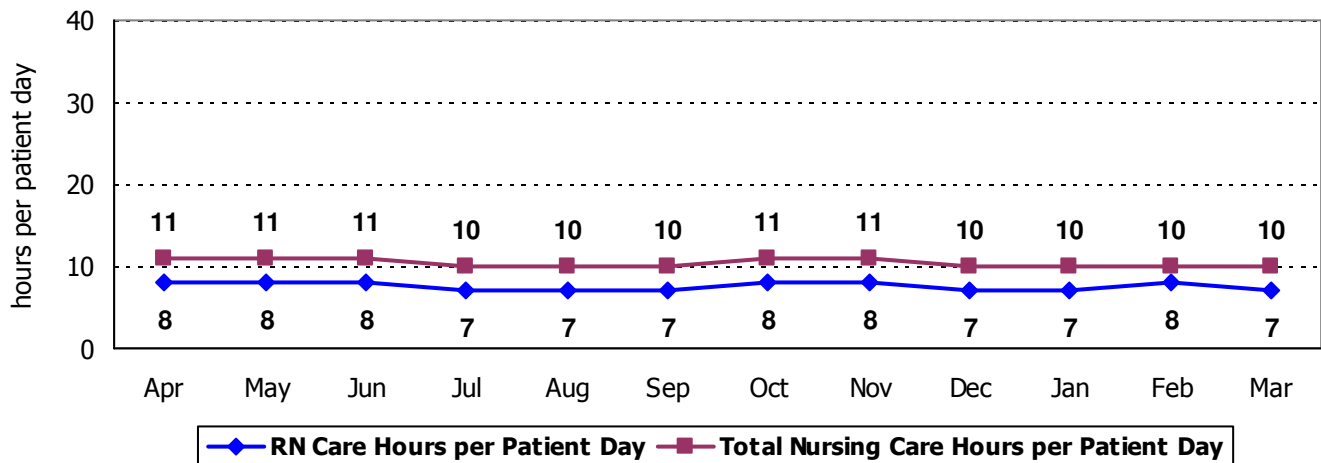
2009 Hospital Report Card Nurse Staffing Data
Rutland Regional Medical Center

RUTLAND REGIONAL MEDICAL CENTER – PROGRESSIVE CARE UNIT

The Progressive Care Unit at Rutland Regional Medical Center is a 17 bed ICU step-down unit which delivers care to the adult patient needing heart monitoring and/or is at risk for developing life-threatening problems.

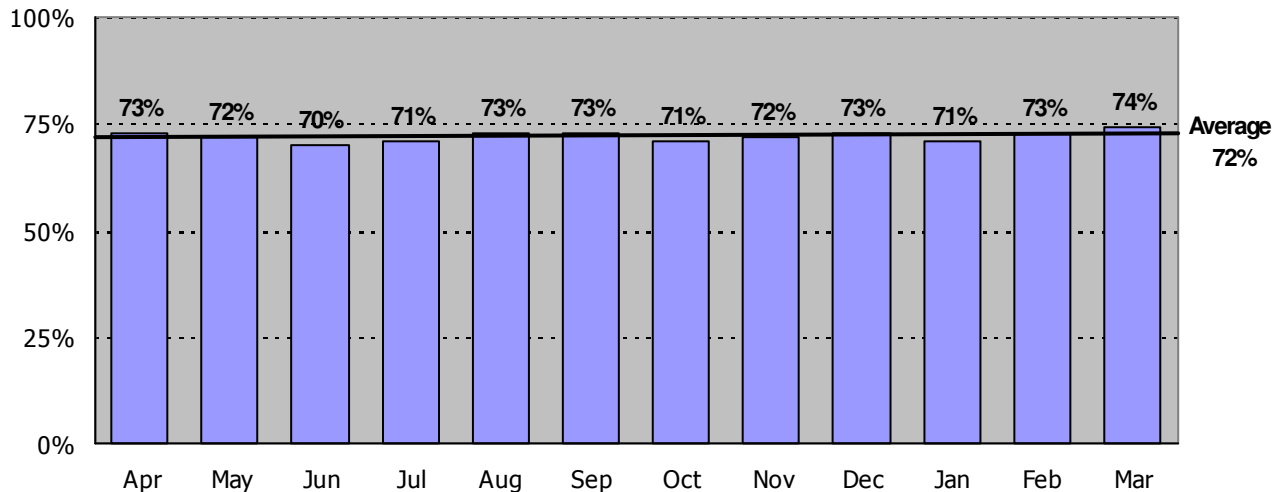
Nursing Care Hours per Patient Day: April 2008 - March 2009

The following graph shows the average number of direct nursing care hours provided per patient during a 24-hour period. Results are shown for each month, for care provided by registered nurses and by all nursing staff.



Percent of Total Nursing Care Hours Provided by RNs: April 2008 - March 2009

The following graph shows the percentage of total nursing hours provided by registered nurses, including the average for this unit.



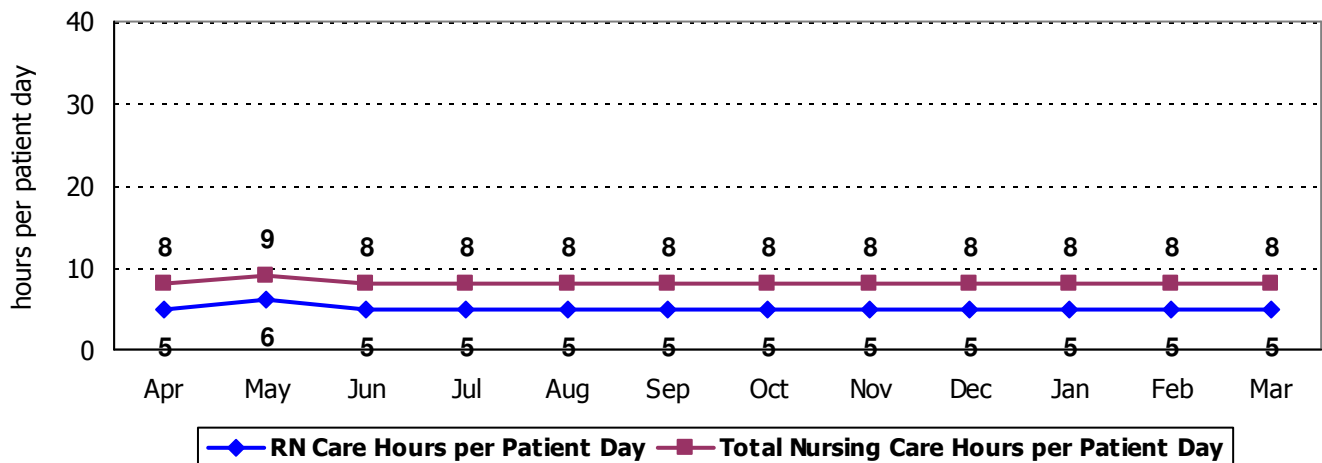
2009 Hospital Report Card Nurse Staffing Data
Rutland Regional Medical Center

RUTLAND REGIONAL MEDICAL CENTER – SURGICAL CARE

The Surgical Care Unit at Rutland Regional Medical Center has 23 licensed beds and cares mainly for adult patients. Types of services provided in this setting may include: care of people with general surgical problems and orthopedic care.

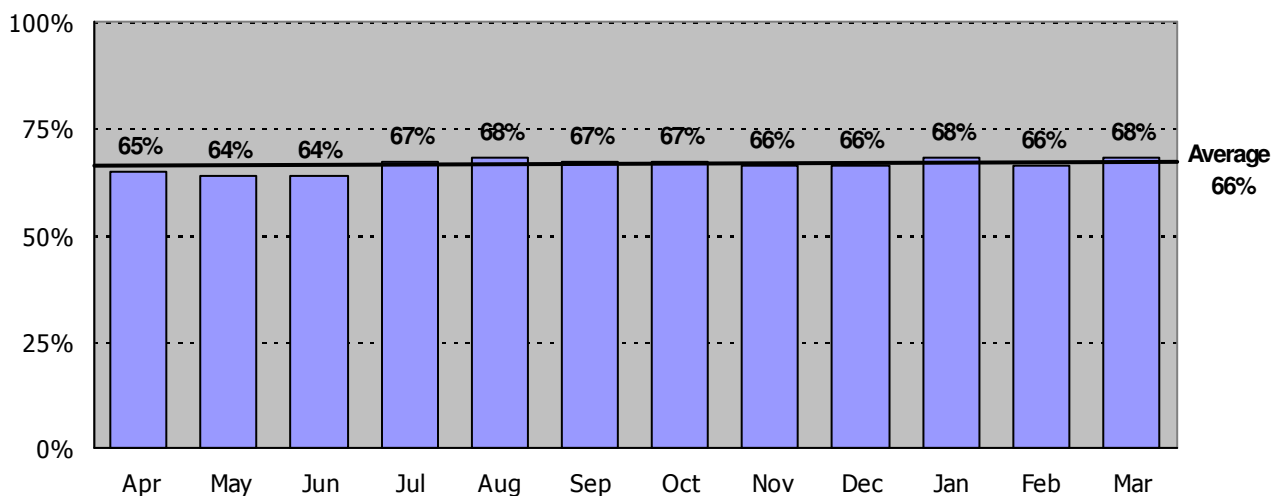
Nursing Care Hours per Patient Day: April 2008 - March 2009

The following graph shows the average number of direct nursing care hours provided per patient during a 24-hour period. Results are shown for each month, for care provided by registered nurses and by all nursing staff.



Percent of Total Nursing Care Hours Provided by RNs: April 2008 - March 2009

The following graph shows the percentage of total nursing hours provided by registered nurses, including the average for this unit.



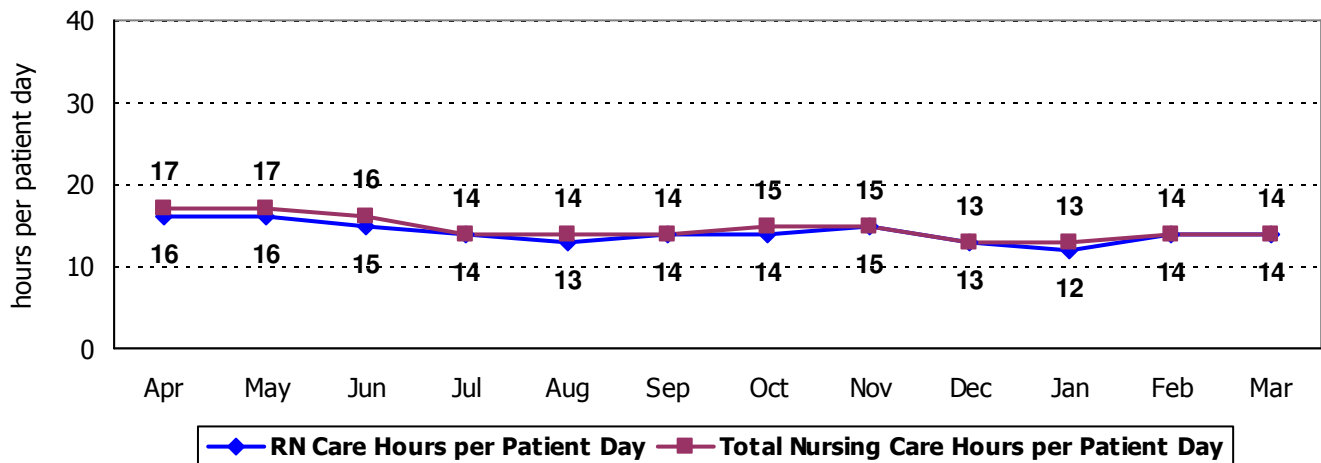
2009 Hospital Report Card Nurse Staffing Data
Rutland Regional Medical Center

RUTLAND REGIONAL MEDICAL CENTER – INTENSIVE CARE UNIT

The Intensive Care unit at Rutland Regional Medical Center has 12 licensed beds. Types of services provided in this setting include care of people with, or at risk of developing, life-threatening problems.

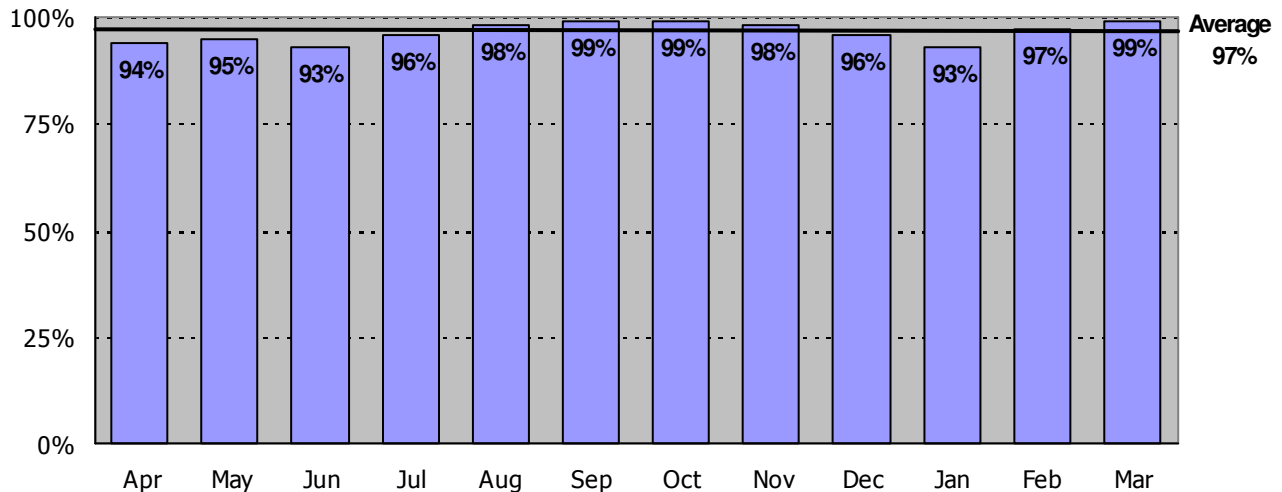
Nursing Care Hours per Patient Day: April 2008 - March 2009

The following graph shows the average number of direct nursing care hours provided per patient during a 24-hour period. Results are shown for each month, for care provided by registered nurses and by all nursing staff.



Percent of Total Nursing Care Hours Provided by RNs: April 2008 - March 2009

The following graph shows the percentage of total nursing hours provided by registered nurses, including the average for this unit.



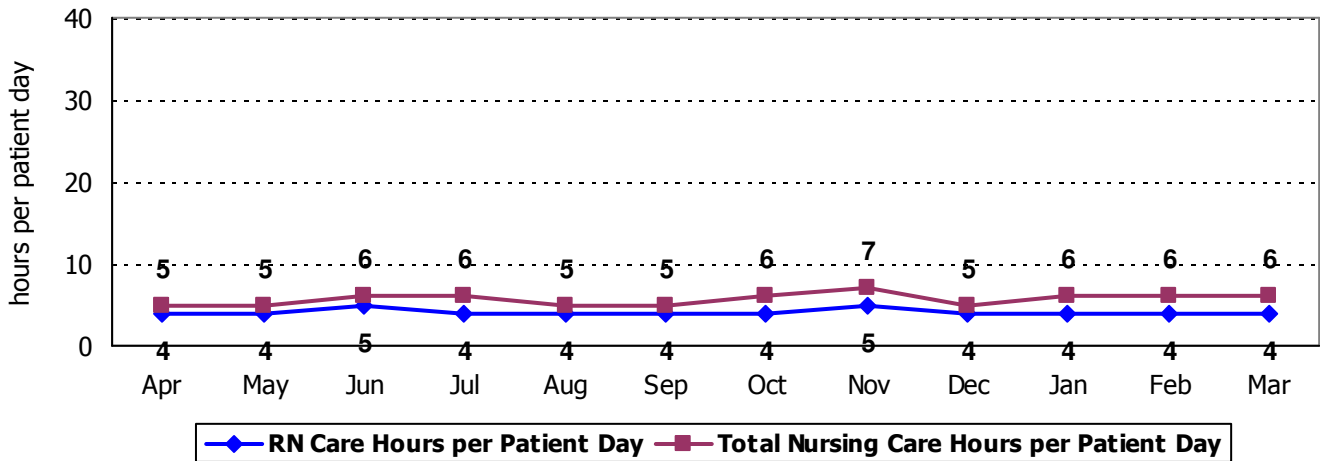
2009 Hospital Report Card Nurse Staffing Data
Rutland Regional Medical Center

RUTLAND REGIONAL MEDICAL CENTER – PSYCHIATRIC UNIT

The Psychiatric Inpatient Unit at Rutland Regional Medical Center has 18 licensed beds and cares for adult patients. Types of services provided in this setting include short-term, secure, inpatient care for individuals with a mental health diagnosis, substance abuse disorder, or both.

Nursing Care Hours per Patient Day: April 2008 - March 2009

The following graph shows the average number of direct nursing care hours provided per patient during a 24-hour period. Results are shown for each month, for care provided by registered nurses and by all nursing staff.



Percent of Total Nursing Care Hours Provided by RNs: April 2008 - March 2009

The following graph shows the percentage of total nursing hours provided by registered nurses, including the average for this unit.

