

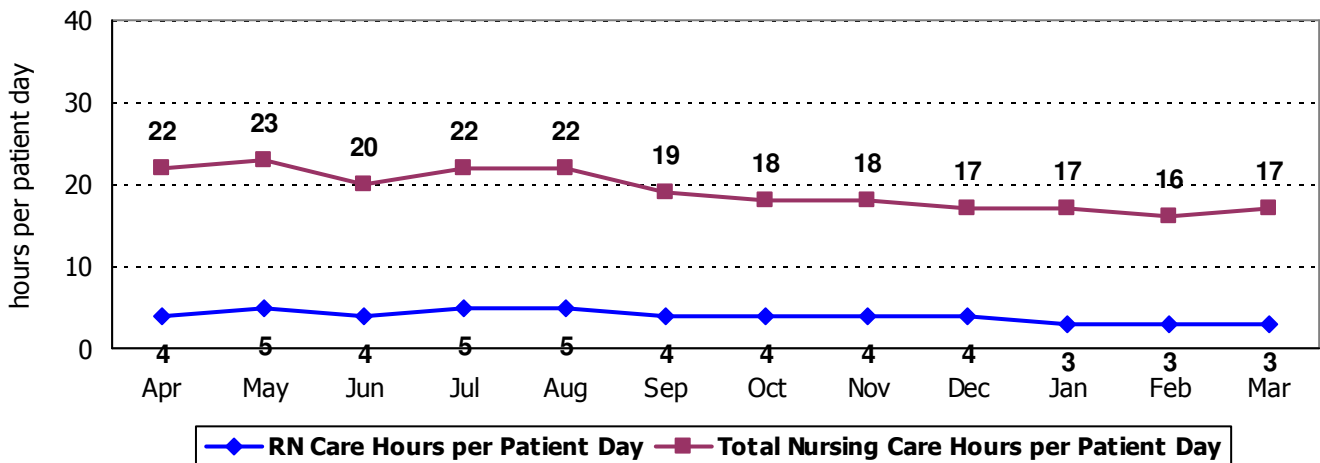
2009 Hospital Report Card Nurse Staffing Data  
**Vermont State Hospital**

**VERMONT STATE HOSPITAL – BROOKS 1 UNIT**

Brooks 1 at the Vermont State Hospital has 19 licensed beds and cares for adult men. All admissions are involuntary. Types of services provided in this setting include secure, inpatient care for individuals with a mental health diagnosis. Individuals are often aggressive, combative, threatening.

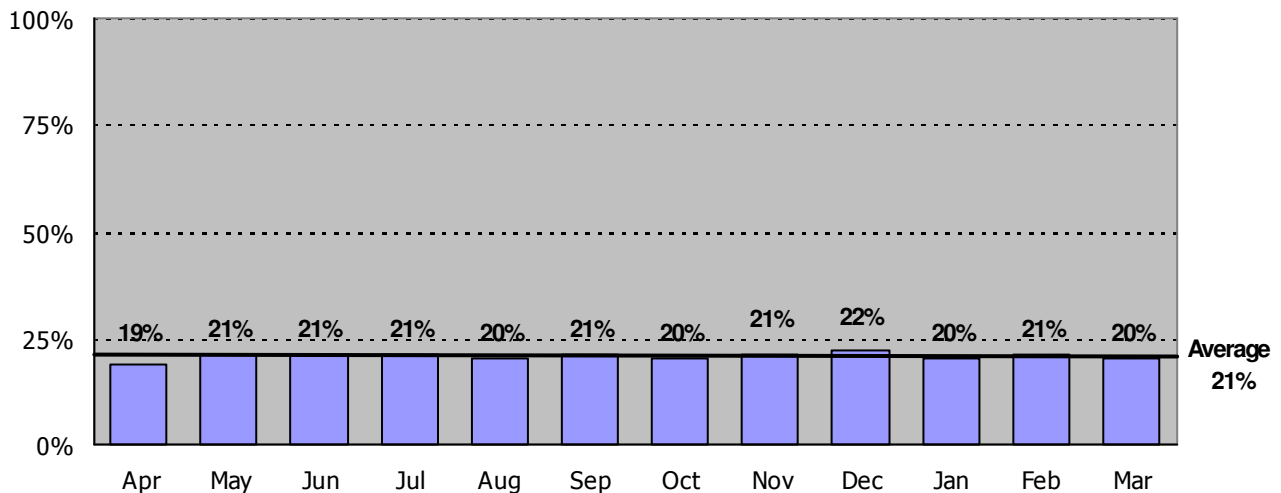
**Nursing Care Hours per Patient Day: April 2008 - March 2009**

The following graph shows the average number of direct nursing care hours provided per patient during a 24-hour period. Results are shown for each month, for care provided by registered nurses and by all nursing staff.



**Percent of Total Nursing Care Hours Provided by RNs: April 2008 - March 2009**

The following graph shows the percentage of total nursing hours provided by registered nurses, including the average for this unit.



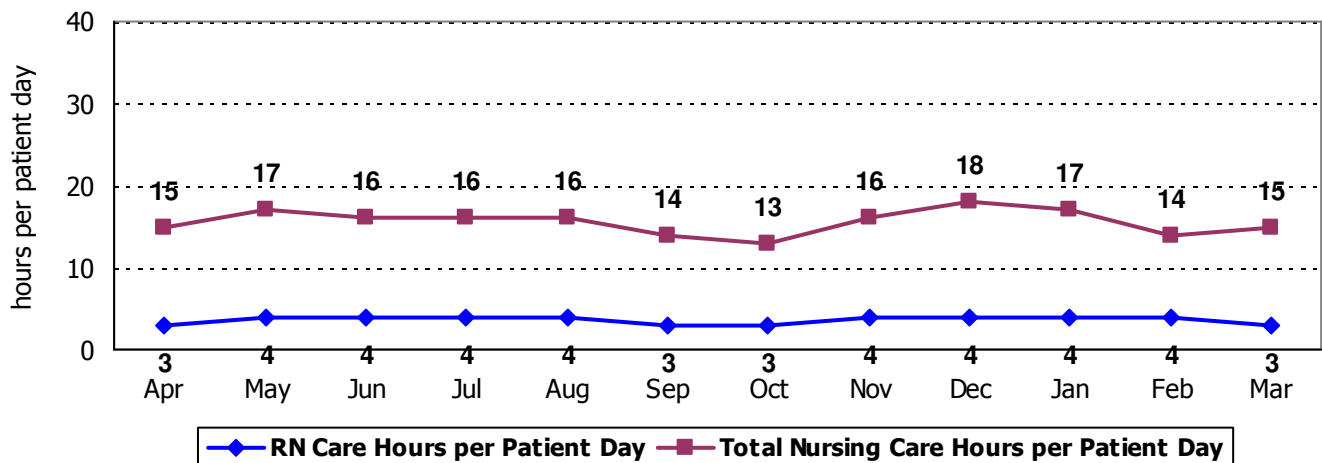
2009 Hospital Report Card Nurse Staffing Data  
**Vermont State Hospital**

**VERMONT STATE HOSPITAL – BROOKS 2 UNIT**

Brooks 2 at the Vermont State Hospital has 21 licensed beds and cares primarily for adult women. All admissions are involuntary. Types of services provided in this setting include secure, inpatient care for individuals with a mental health diagnosis. Individuals are often aggressive, combative, threatening and severely self-harming.

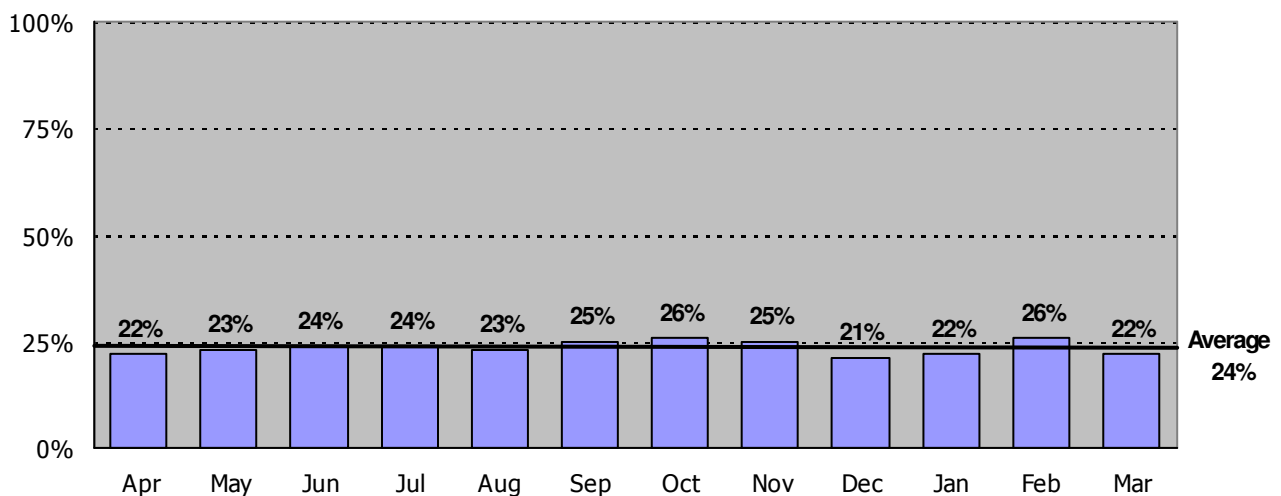
**Nursing Care Hours per Patient Day: April 2008 - March 2009**

The following graph shows the average number of direct nursing care hours provided per patient during a 24-hour period. Results are shown for each month, for care provided by registered nurses and by all nursing staff.



**Percent of Total Nursing Care Hours Provided by RNs: April 2008 - March 2009**

The following graph shows the percentage of total nursing hours provided by registered nurses, including the average for this unit.



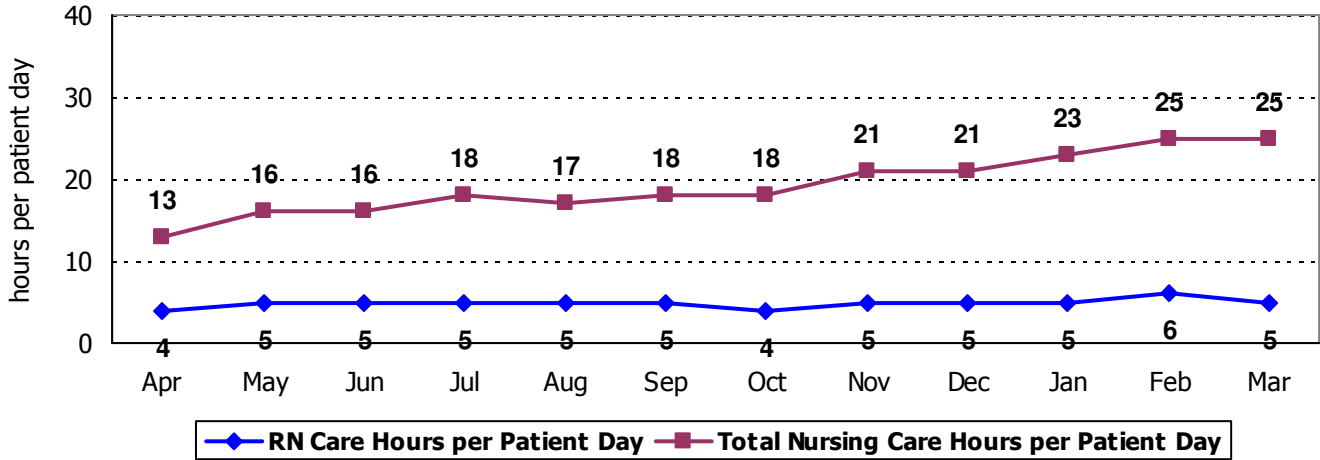
2009 Hospital Report Card Nurse Staffing Data  
**Vermont State Hospital**

**VERMONT STATE HOSPITAL – BROOKS REHAB UNIT**

Brooks Rehab at the Vermont State Hospital has 14 licensed beds and cares for adult patients. Types of services provided in this setting include secure, inpatient care for individuals with a mental health diagnosis who no longer need the level of care required on the other units. Patients on this unit have fewer behavior problems, but often more medical problems. Elderly patients are often placed on this unit.

**Nursing Care Hours per Patient Day: April 2008 - March 2009**

The following graph shows the average number of direct nursing care hours provided per patient during a 24-hour period. Results are shown for each month, for care provided by registered nurses and by all nursing staff.



**Percent of Total Nursing Care Hours Provided by RNs: April 2008 - March 2009**

The following graph shows the percentage of total nursing hours provided by registered nurses, including the average for this unit.

