

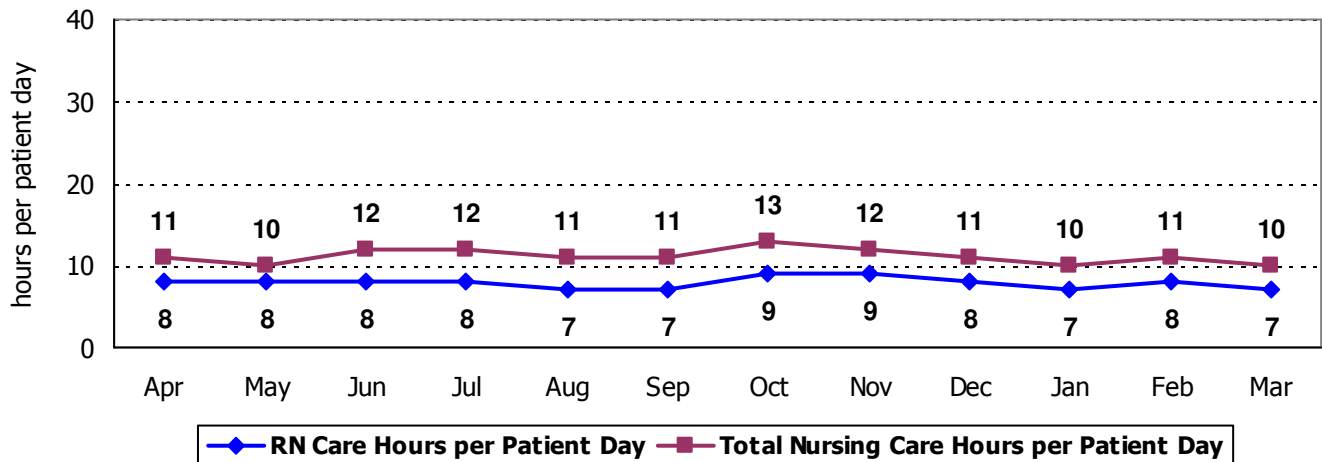
2009 Hospital Report Card Nurse Staffing Data
Brattleboro Memorial Hospital

BRATTLEBORO MEMORIAL HOSPITAL - MEDICAL/SURGICAL UNIT

The Medical/Surgical units at Brattleboro Memorial Hospital have 46 licensed beds and cares for patients of all ages. Types of services provided in this setting may include: care of people with general medical and surgical problems; heart monitoring; and end-of-life care. Nursing staff includes both RNs and LPNs.

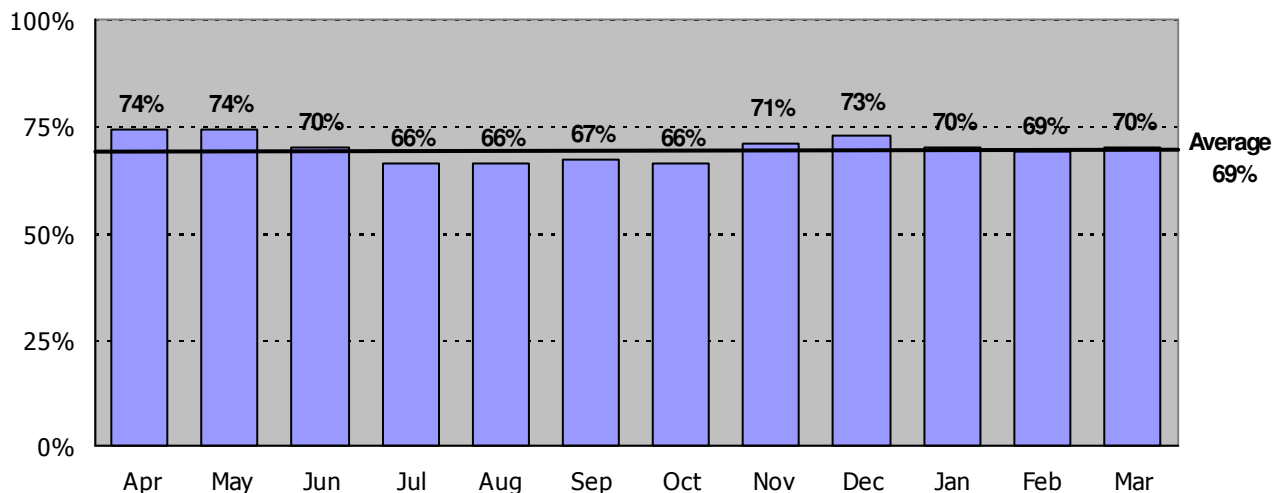
Nursing Care Hours per Patient Day: April 2008 - March 2009

The following graph shows the average number of direct nursing care hours provided per patient during a 24-hour period. Results are shown for each month, for care provided by registered nurses and by all nursing staff.



Percent of Total Nursing Care Hours Provided by RNs: April 2008 - March 2009

The following graph shows the percentage of total nursing hours provided by registered nurses, including the average for this unit.



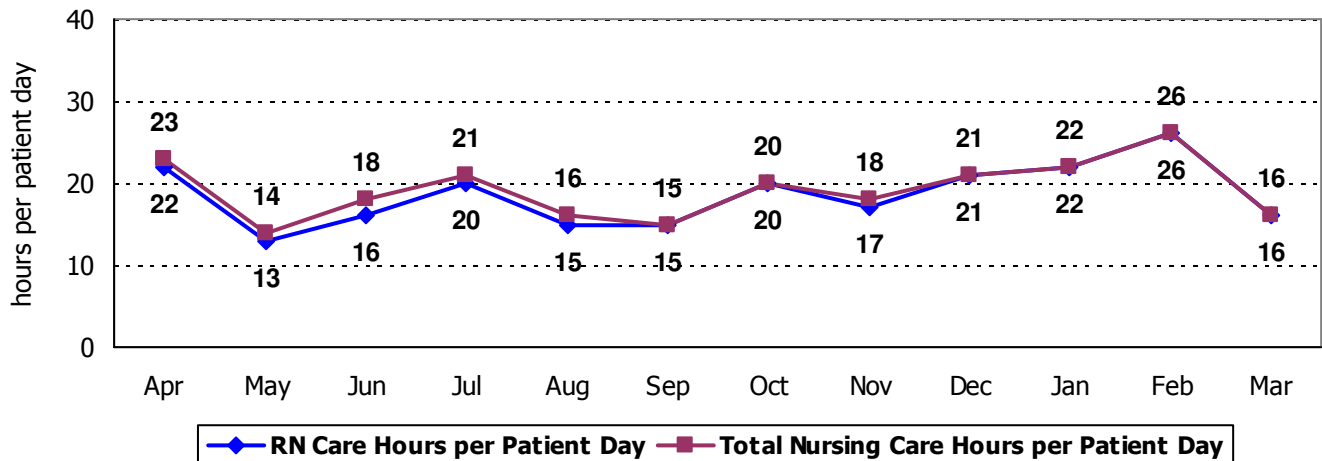
2009 Hospital Report Card Nurse Staffing Data
Brattleboro Memorial Hospital

BRATTLEBORO MEMORIAL HOSPITAL – SPECIAL CARE UNIT

The Special Care unit at Brattleboro Memorial Hospital has 5 licensed beds. Types of services provided in this setting include care of people with, or at risk of developing, life-threatening problems.

Nursing Care Hours per Patient Day: April 2008 - March 2009

The following graph shows the average number of direct nursing care hours provided per patient during a 24-hour period. Results are shown for each month, for care provided by registered nurses and by all nursing staff.



Percent of Total Nursing Care Hours Provided by RNs: April 2008 - March 2009

The following graph shows the percentage of total nursing hours provided by registered nurses, including the average for this unit.

