

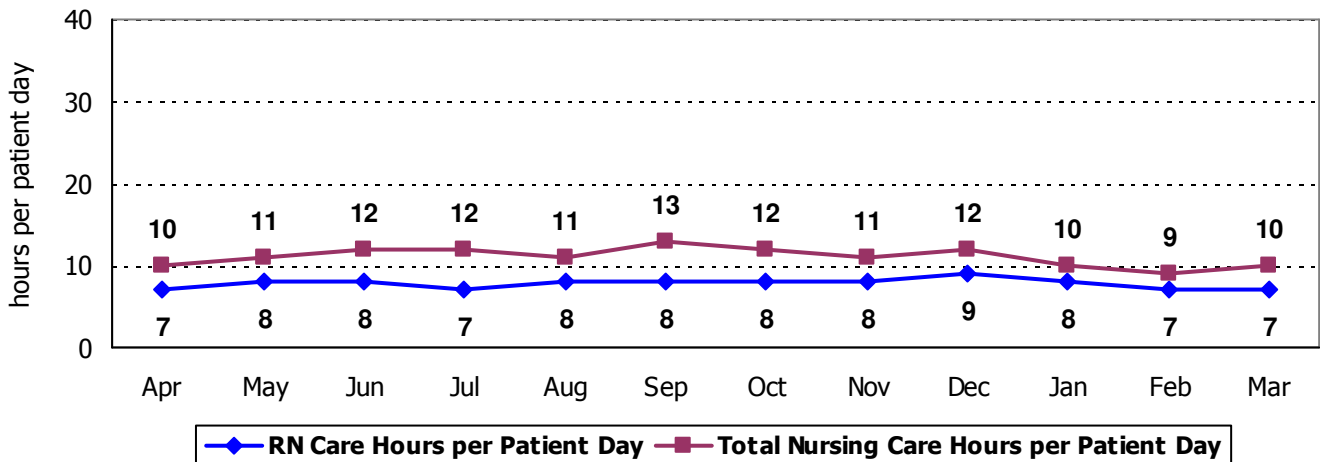
2009 Hospital Report Card Nurse Staffing Data
Copley Hospital

COPLEY HOSPITAL - MEDICAL/SURGICAL UNIT

The Medical/Surgical Unit at Copley Hospital has 14 licensed beds and cares for patients of all ages. Types of services provided in this setting may include: care of people with general medical and surgical problems; care of stable and uncomplicated pediatric patients; end-of-life care; rehabilitative care; and skilled nursing facility (SNF) care.

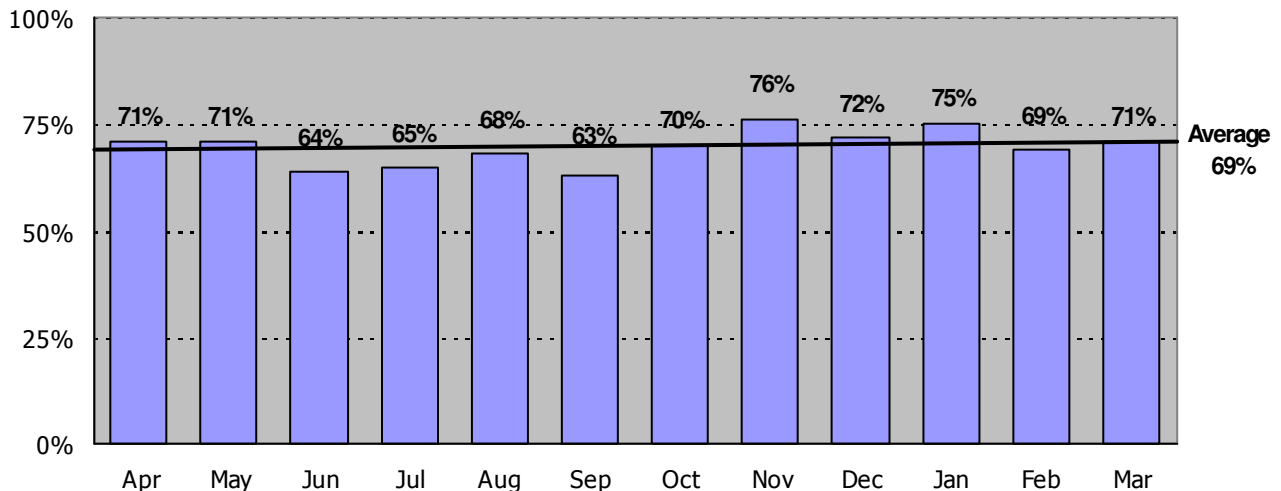
Nursing Care Hours per Patient Day: April 2008 - March 2009

The following graph shows the average number of direct nursing care hours provided per patient during a 24-hour period. Results are shown for each month, for care provided by registered nurses and by all nursing staff.



Percent of Total Nursing Care Hours Provided by RNs: April 2008 - March 2009

The following graph shows the percentage of total nursing hours provided by registered nurses, including the average for this unit.



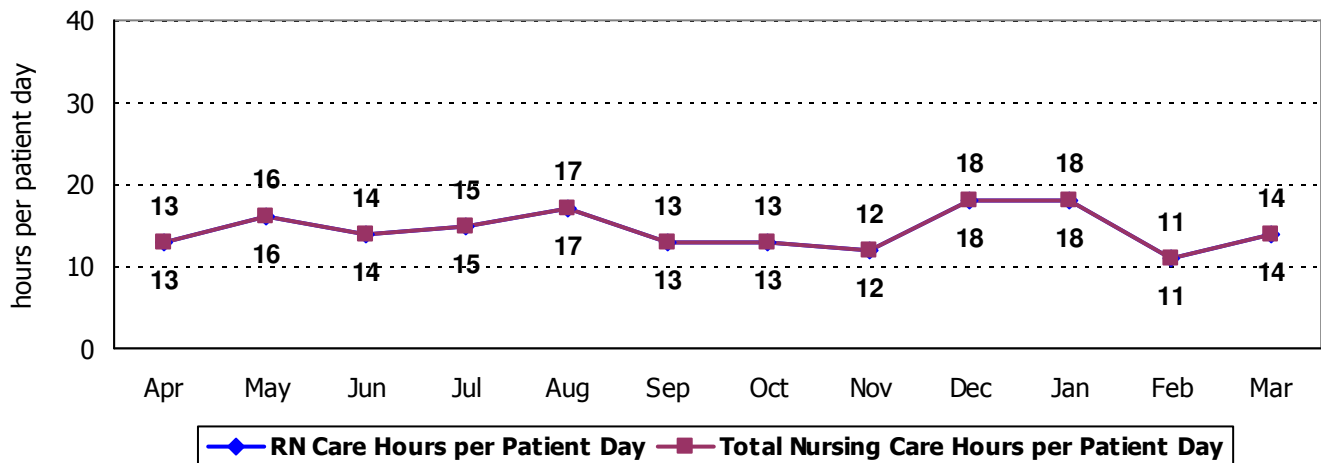
2009 Hospital Report Card Nurse Staffing Data
Copley Hospital

COPLEY HOSPITAL – SPECIAL CARE UNIT

The Special Care Unit at Copley Hospital has 7 beds. Types of services provided in this setting include care of people with, or at risk of developing, life-threatening problems.

Nursing Care Hours per Patient Day: April 2008 - March 2009

The following graph shows the average number of direct nursing care hours provided per patient during a 24-hour period. Results are shown for each month, for care provided by registered nurses and by all nursing staff.



Percent of Total Nursing Care Hours Provided by RNs: April 2008 - March 2009

The following graph shows the percentage of total nursing hours provided by registered nurses, including the average for this unit.

