

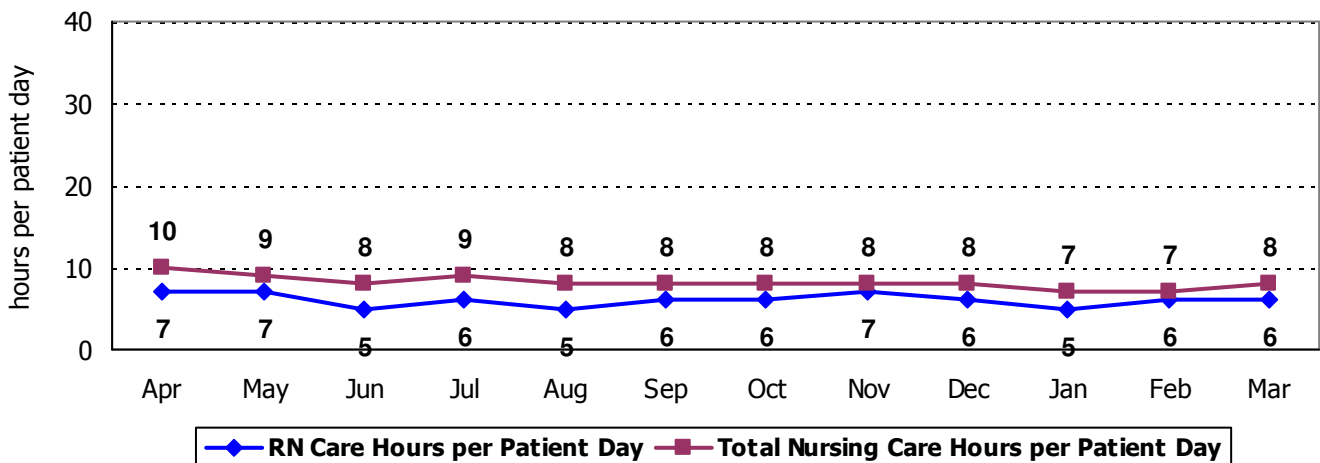
2009 Hospital Report Card Nurse Staffing Data  
**Northwestern Medical Center**

**NORTHWESTERN MEDICAL CENTER - MEDICAL/SURGICAL UNIT**

The Medical/Surgical unit at Northwestern Medical Center has 32 licensed beds and cares for primarily adult patients. Types of services provided in this setting may include: care of people with general medical and surgical problems; heart monitoring; end-of-life care; and rehabilitative care. Patients who are awaiting nursing home placement are sometimes cared for on this unit.

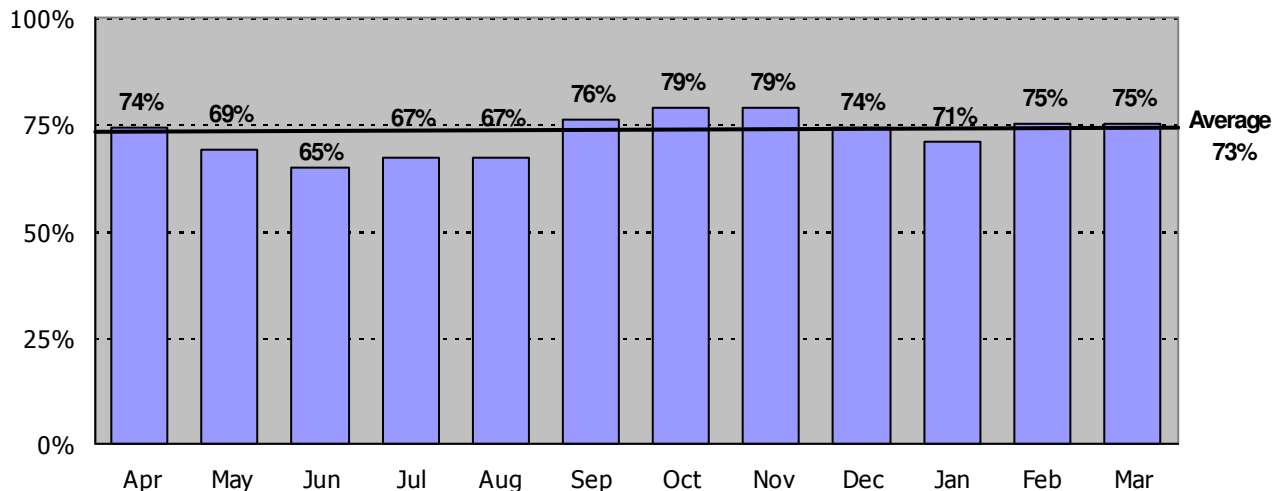
**Nursing Care Hours per Patient Day: April 2008 - March 2009**

The following graph shows the average number of direct nursing care hours provided per patient during a 24-hour period. Results are shown for each month, for care provided by registered nurses and by all nursing staff.



**Percent of Total Nursing Care Hours Provided by RNs: April 2008 - March 2009**

The following graph shows the percentage of total nursing hours provided by registered nurses, including the average for this unit.



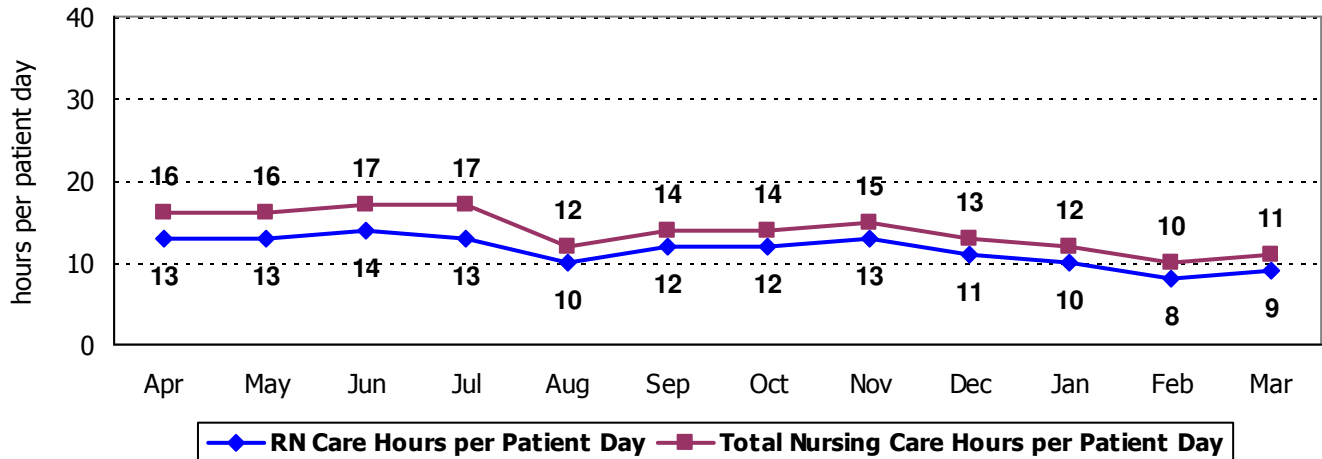
2009 Hospital Report Card Nurse Staffing Data  
**Northwestern Medical Center**

**NORTHWESTERN MEDICAL CENTER – INTENSIVE CARE UNIT**

The Intensive Care unit at Northwestern Medical Center has 10 licensed beds including 6 step-down beds. Types of services provided in this setting include care of people with, or at risk of developing, life-threatening problems. The step-down beds are used for people who are moving from the intensive care unit to the medical/surgical unit. In addition, patients who have general medical and surgical problems; heart monitoring; end-of-life care; and rehabilitative care and patients who are awaiting nursing home placement are sometimes cared for on this unit.

**Nursing Care Hours per Patient Day: April 2008 - March 2009**

The following graph shows the average number of direct nursing care hours provided per patient during a 24-hour period. Results are shown for each month, for care provided by registered nurses and by all nursing staff.



**Percent of Total Nursing Care Hours Provided by RNs: April 2008 - March 2009**

The following graph shows the percentage of total nursing hours provided by registered nurses, including the average for this unit.

