

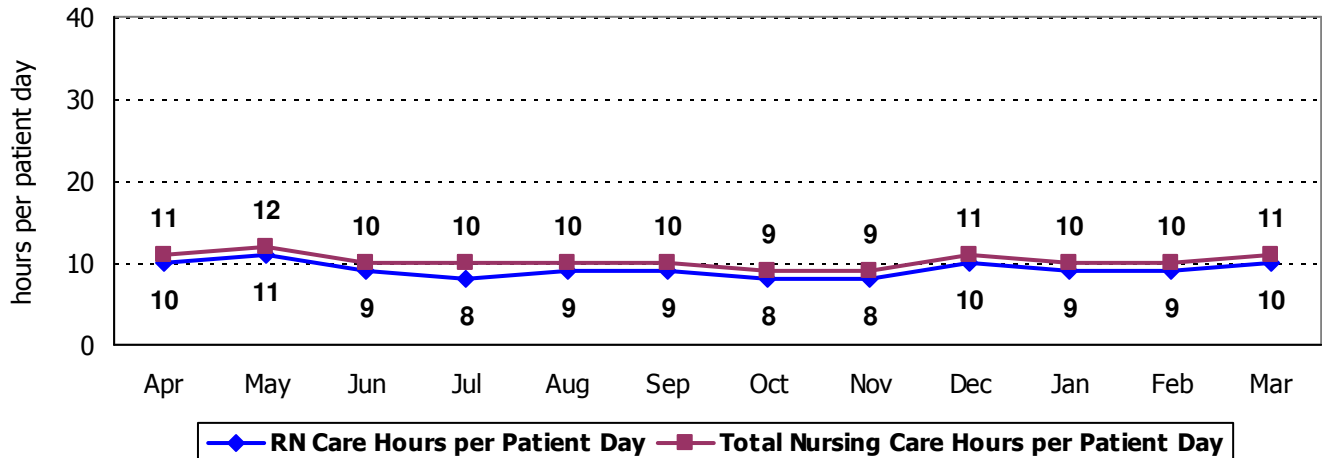
2009 Hospital Report Card Nurse Staffing Data  
**Northeastern Vermont Regional Hospital**

**NORTHEASTERN VERMONT REGIONAL HOSPITAL- MEDICAL/SURGICAL UNIT**

The Medical/Surgical Unit at Northeastern Vermont Hospital has 18 licensed beds and cares for patients of all ages. Types of services provided in this setting may include: care of people with general medical and surgical problems; heart monitoring; end-of-life care; and rehabilitative care. Short term care for people who cannot manage independently in their home (Swing Bed Patients) is also provided.

**Nursing Care Hours per Patient Day: April 2008 - March 2009**

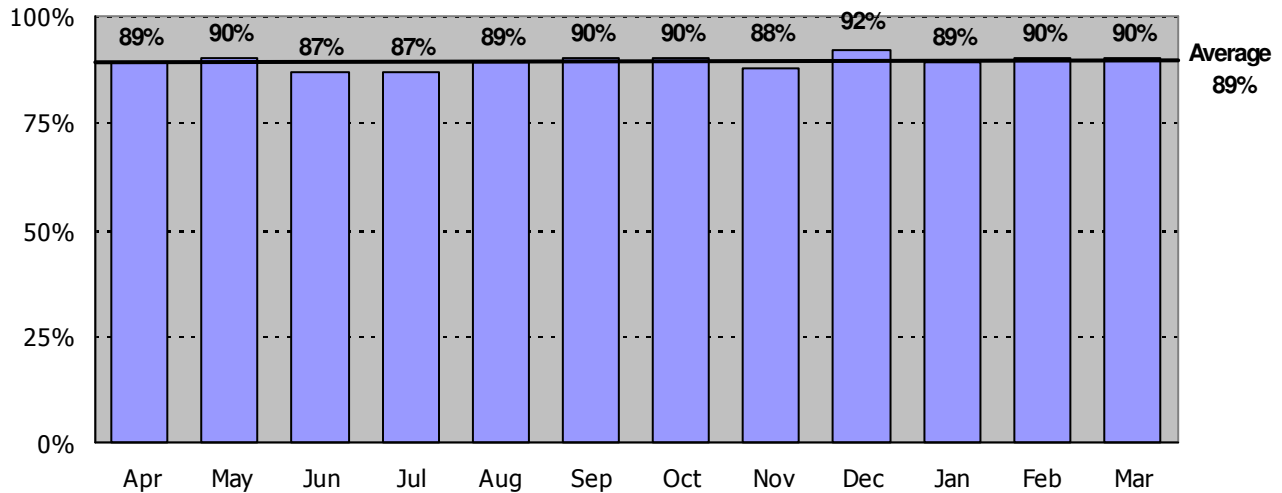
The following graph shows the average number of direct nursing care hours provided per patient during a 24-hour period. Results are shown for each month, for care provided by registered nurses and by all nursing staff.



**Percent of Total Nursing Care Hours Provided by RNs: April 2008 - March 2009**

The following graph shows the percentage of total nursing hours provided by registered nurses, including the average for this unit.

2009 Hospital Report Card Nurse Staffing Data  
**Northeastern Vermont Regional Hospital**

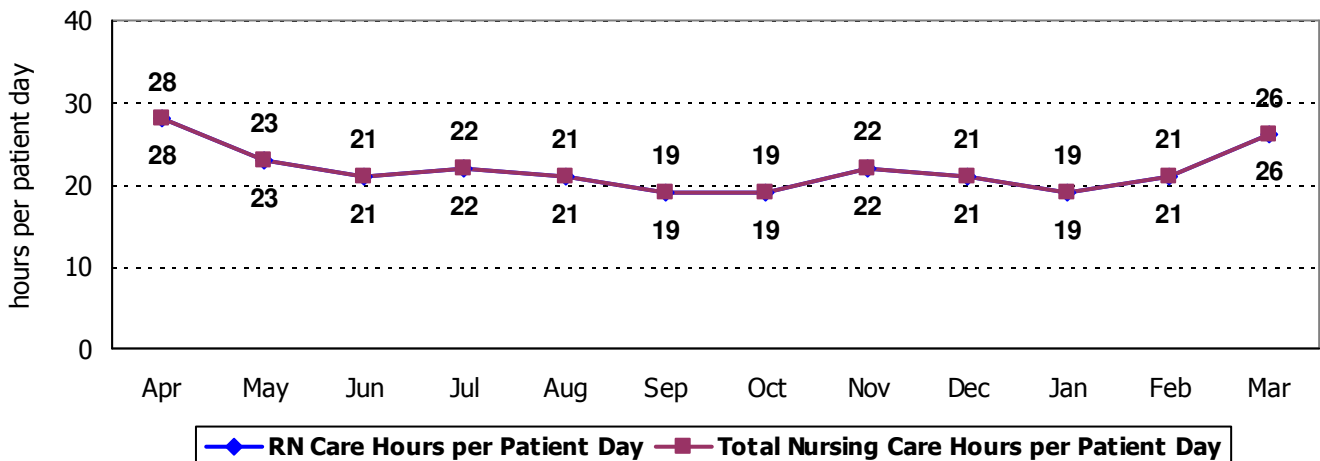


**NORTHEASTERN VERMONT REGIONAL HOSPITAL – SPECIAL CARE UNIT**

The Special Care Unit at Northeastern Vermont Hospital has 4 licensed beds and cares for patients of all ages. Types of services provided in this setting include care of people with, or at risk of developing, life-threatening problems.

**Nursing Care Hours per Patient Day: April 2008 - March 2009**

The following graph shows the average number of direct nursing care hours provided per patient during a 24-hour period. Results are shown for each month, for care provided by registered nurses and by all nursing staff.



**Percent of Total Nursing Care Hours Provided by RNs: April 2008 - March 2009**

The following graph shows the percentage of total nursing hours provided by registered nurses, including the average for this unit.

2009 Hospital Report Card Nurse Staffing Data  
**Northeastern Vermont Regional Hospital**

