

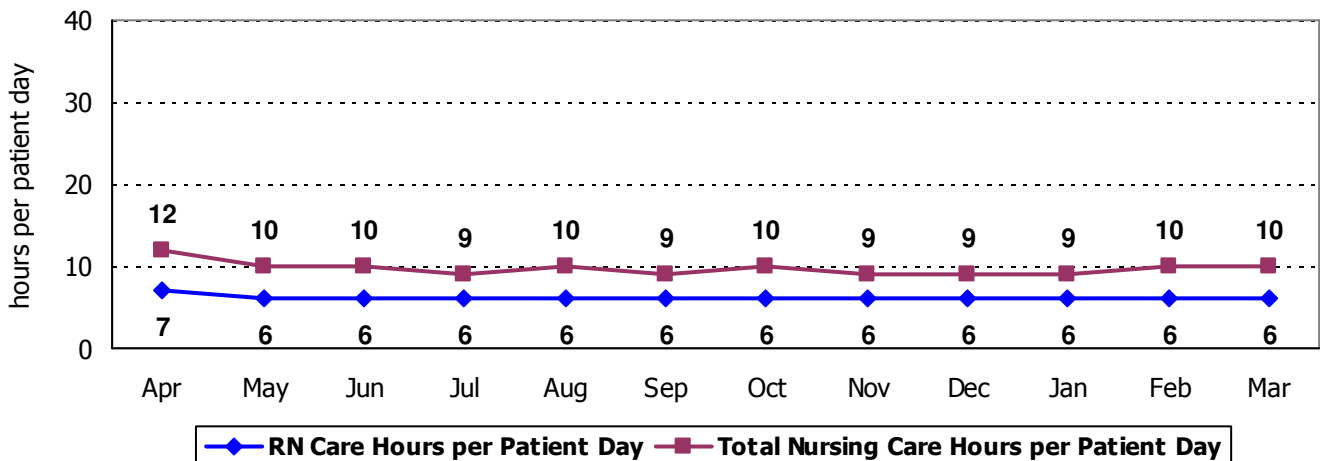
2009 Hospital Report Card Nurse Staffing Data  
**Southwestern Vermont Medical Center**

**SOUTHWESTERN VERMONT MEDICAL CENTER - MEDICAL/SURGICAL UNIT**

The Medical/Surgical unit at Southwestern Vermont Medical Center has 51 licensed beds and cares for patients ages 15 and older. Types of services provided in this setting may include: care of people with general medical and surgical problems; heart monitoring; end-of-life care; and rehabilitative care.

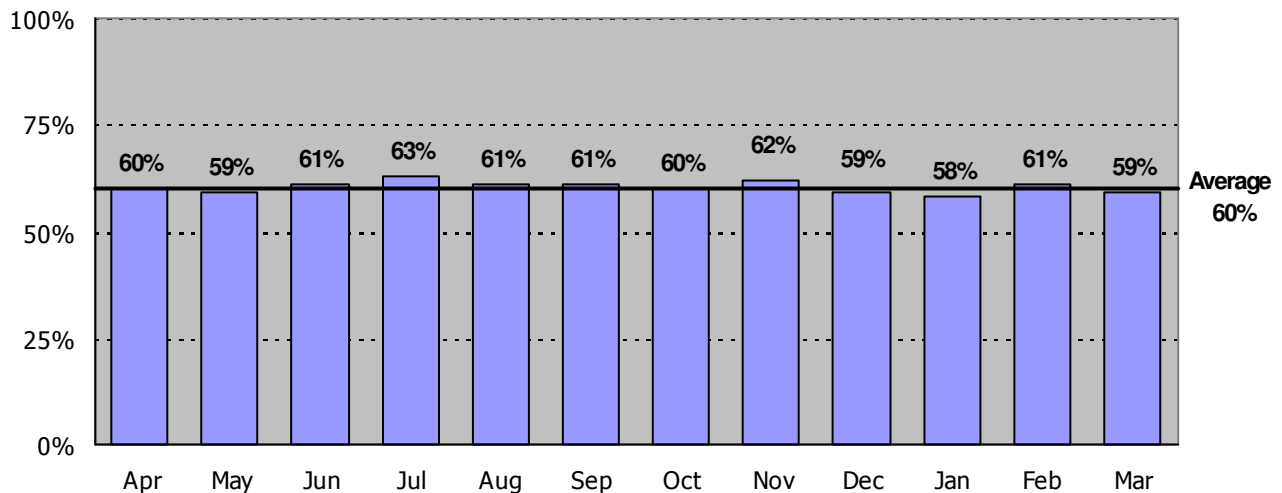
**Nursing Care Hours per Patient Day: April 2008 - March 2009**

The following graph shows the average number of direct nursing care hours provided per patient during a 24-hour period. Results are shown for each month, for care provided by registered nurses and by all nursing staff.



**Percent of Total Nursing Care Hours Provided by RNs: April 2008 - March 2009**

The following graph shows the percentage of total nursing hours provided by registered nurses, including the average for this unit.



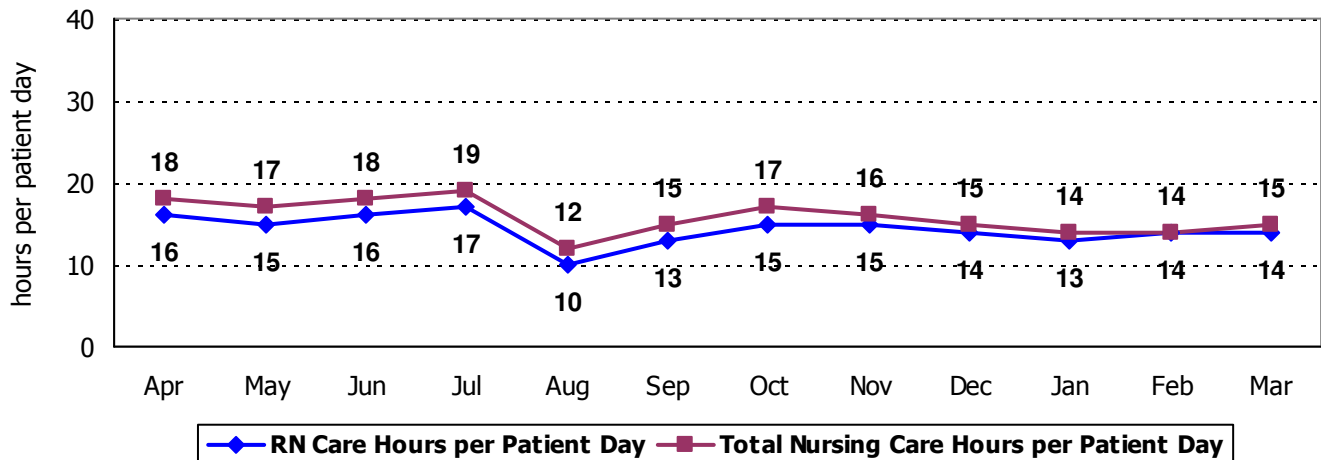
2009 Hospital Report Card Nurse Staffing Data  
**Southwestern Vermont Medical Center**

**SOUTHWESTERN VERMONT MEDICAL CENTER – INTENSIVE CARE UNIT**

The Intensive Care unit at Southwestern Vermont Medical Center has 12 licensed beds. Types of services provided in this setting include care of people with, or at risk of developing, life-threatening problems.

**Nursing Care Hours per Patient Day: April 2008 - March 2009**

The following graph shows the average number of direct nursing care hours provided per patient during a 24-hour period. Results are shown for each month, for care provided by registered nurses and by all nursing staff.



**Percent of Total Nursing Care Hours Provided by RNs: April 2008 - March 2009**

The following graph shows the percentage of total nursing hours provided by registered nurses, including the average for this unit.

