

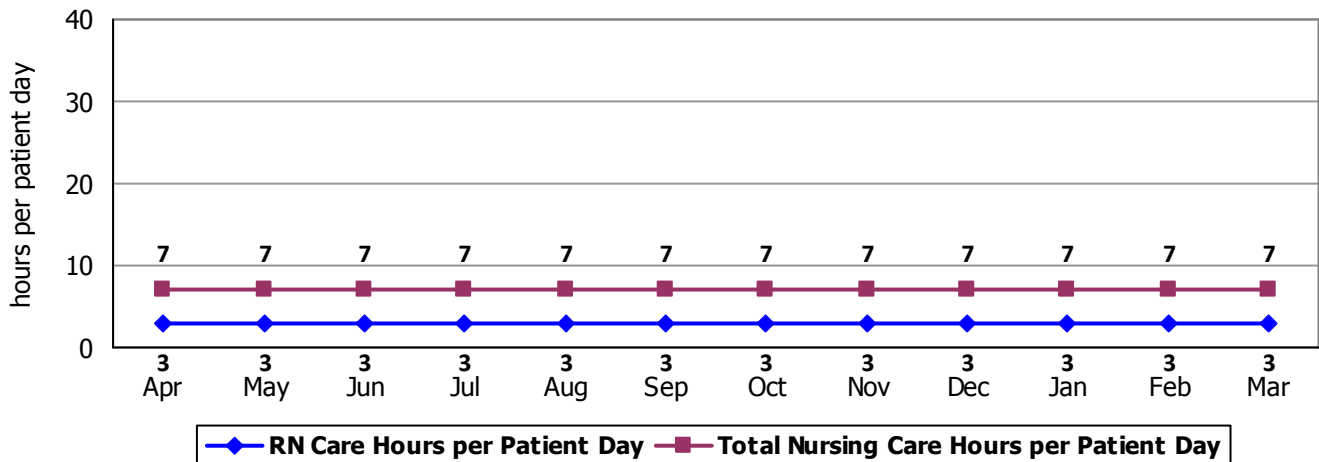
2010 Hospital Report Card Nurse Staffing Data
Brattleboro Retreat

BRATTLEBORO RETREAT – BEHAVIORAL HEALTH UNITS (“CORE”)

The Co-occurring unit (CORE) at the Brattleboro Retreat has 22 licensed beds and cares for adult patients. Types of services provided in this setting include secure, inpatient care for individuals with both a mental health diagnosis and a substance abuse disorder. Some individuals in this unit may need constant 1-to-1 nursing care.

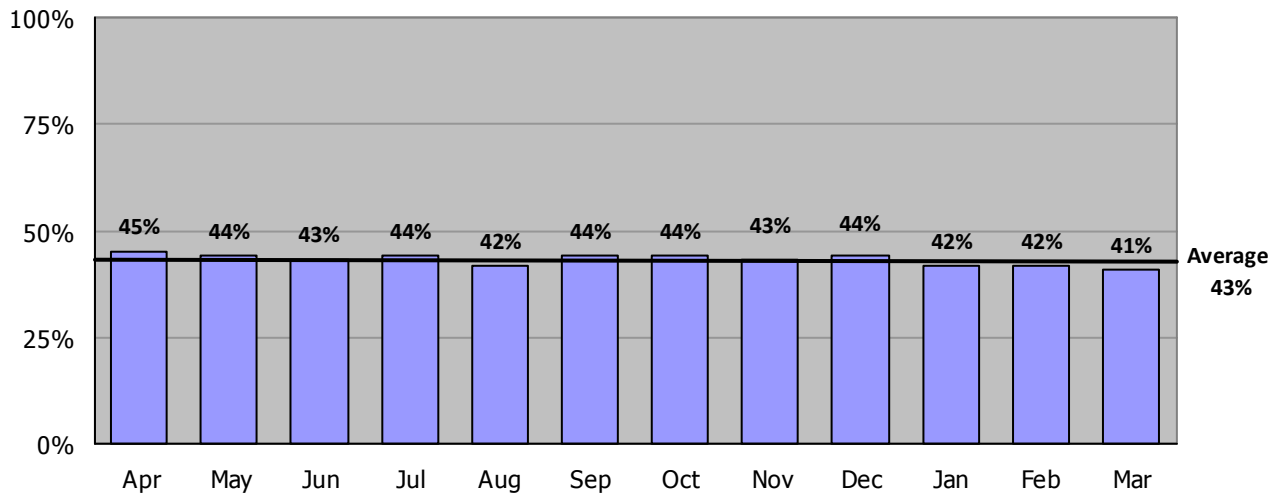
Nursing Care Hours per Patient Day: April 2009 - March 2010

The following graph shows the average number of direct nursing care hours provided per patient during a 24-hour period. Results are shown for each month, for care provided by registered nurses and by all nursing staff.



Percent of Total Nursing Care Hours Provided by RNs: April 2009 - March 2010

The following graph shows the percentage of total nursing hours provided by registered nurses, including the average for this unit.



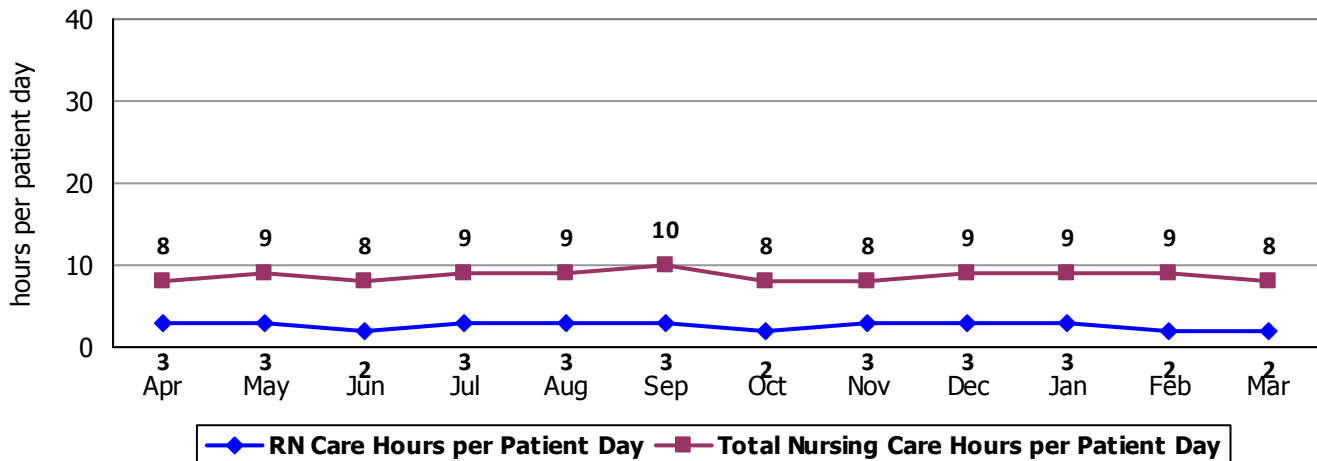
2010 Hospital Report Card Nurse Staffing Data
Brattleboro Retreat

BRATTLEBORO RETREAT – ADULT PSYCHIATRIC UNIT (ACUTE CARE)

The Acute Inpatient Care unit at the Brattleboro Retreat has 24 licensed beds and cares for adult patients. Types of services provided in this setting include secure, inpatient care for individuals with a mental health diagnosis. Some individuals in this unit may need constant 1-to-1 nursing care.

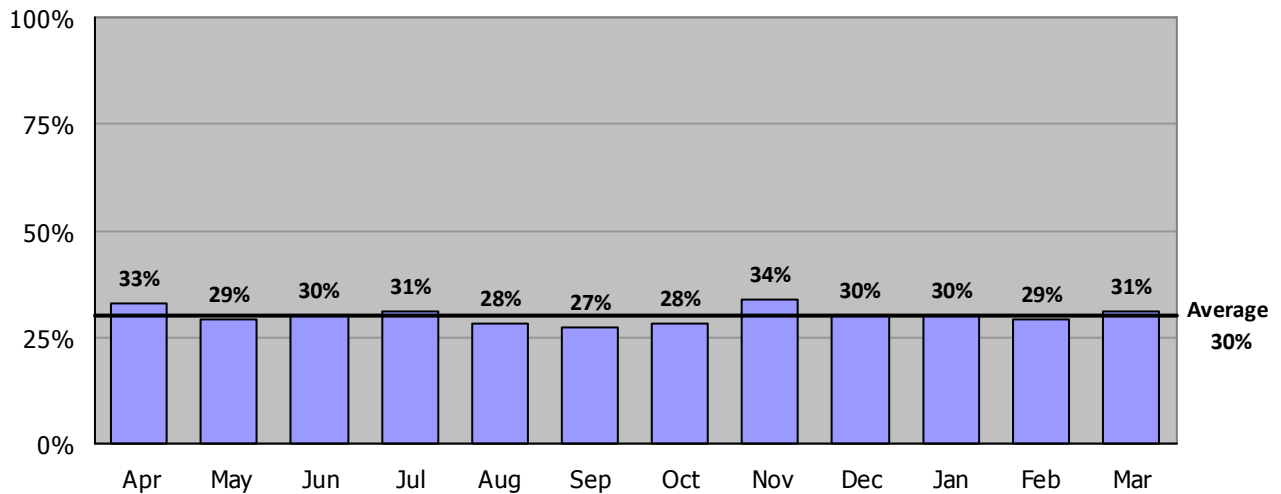
Nursing Care Hours per Patient Day: April 2009 - March 2010

The following graph shows the average number of direct nursing care hours provided per patient during a 24-hour period. Results are shown for each month, for care provided by registered nurses and by all nursing staff.



Percent of Total Nursing Care Hours Provided by RNs: April 2009 - March 2010

The following graph shows the percentage of total nursing hours provided by registered nurses, including the average for this unit.



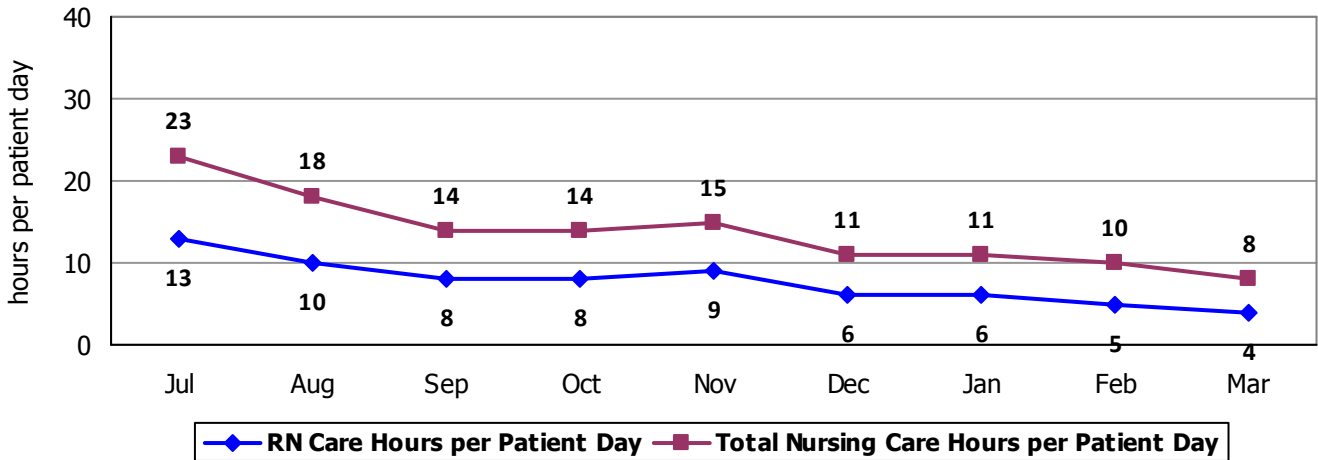
2010 Hospital Report Card Nurse Staffing Data
Brattleboro Retreat

BRATTLEBORO RETREAT – ADULT PSYCHIATRIC UNIT (TYLER 4)

The adult inpatient psychiatric unit on Tyler 4 opened in July 2009. The unit has 16 licensed beds and includes a track for the treatment of lesbian, gay, bisexual, and transgender adults. Services provided in this setting include secure, inpatient care for individuals with a mental health diagnosis. Some individuals in this unit may need constant 1-to-1 nursing care.

Nursing Care Hours per Patient Day: July 2009 - March 2010

The following graph shows the average number of direct nursing care hours provided per patient during a 24-hour period. Results are shown for each month, for care provided by registered nurses and by all nursing staff.



Percent of Total Nursing Care Hours Provided by RNs: July 2009 - March 2010

The following graph shows the percentage of total nursing hours provided by registered nurses, including the average for this unit.

