

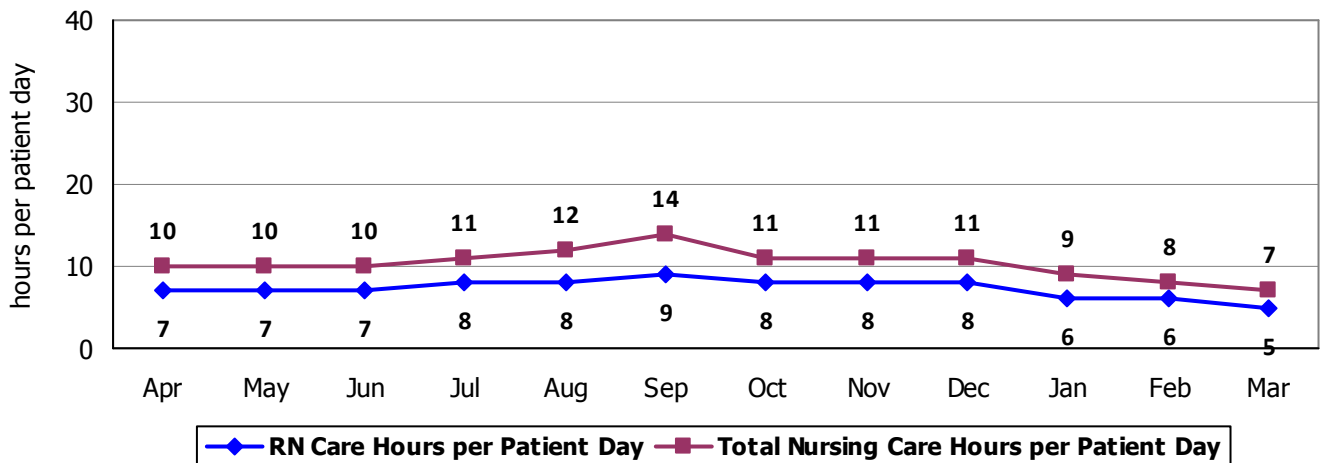
2010 Hospital Report Card Nurse Staffing Data  
**Central Vermont Medical Center**

**CENTRAL VERMONT MEDICAL CENTER – MEDICAL/SURGICAL UNIT**

The Medical/Surgical unit at Central Vermont Medical Center has 37 licensed beds and cares for adult patients. Types of services provided in this setting may include: care of people with general medical and surgical problems; heart monitoring; end-of-life care; and rehabilitative care.

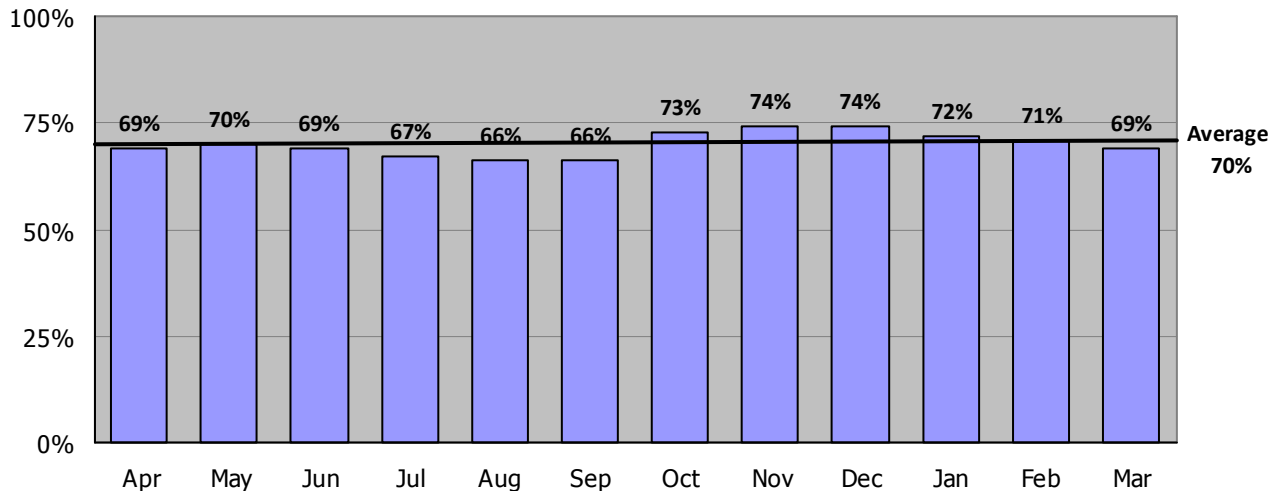
**Nursing Care Hours per Patient Day: April 2009 - March 2010**

The following graph shows the average number of direct nursing care hours provided per patient during a 24-hour period. Results are shown for each month, for care provided by registered nurses and by all nursing staff.



**Percent of Total Nursing Care Hours Provided by RNs: April 2009 - March 2010**

The following graph shows the percentage of total nursing hours provided by registered nurses, including the average for this unit.



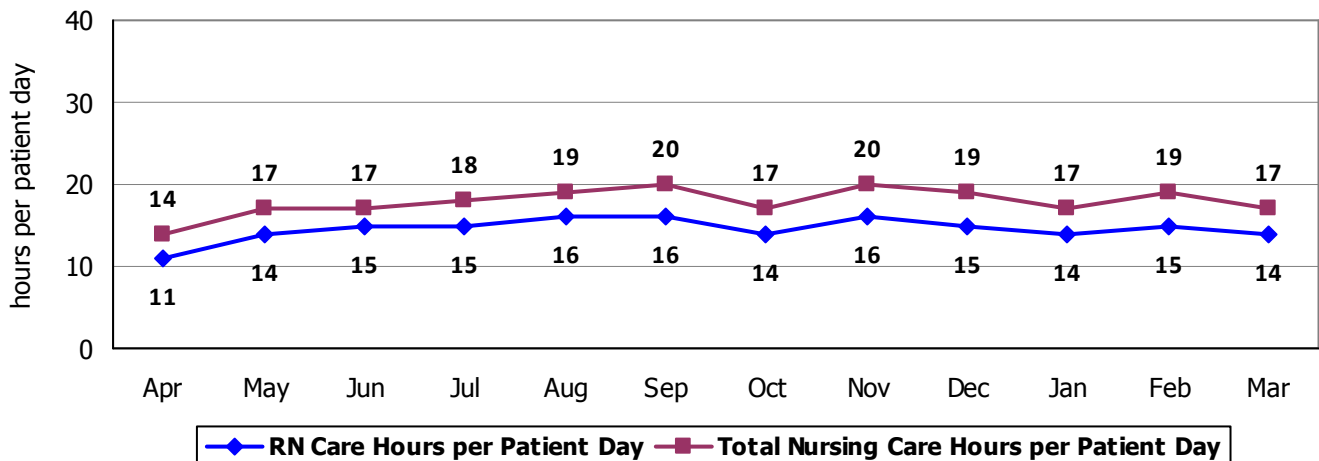
2010 Hospital Report Card Nurse Staffing Data  
**Central Vermont Medical Center**

**CENTRAL VERMONT MEDICAL CENTER – INTENSIVE CARE UNIT**

The Intensive Care unit at Central Vermont Medical Center has 14 licensed beds. Types of services provided in this setting include care of people with, or at risk of developing, life-threatening problems.

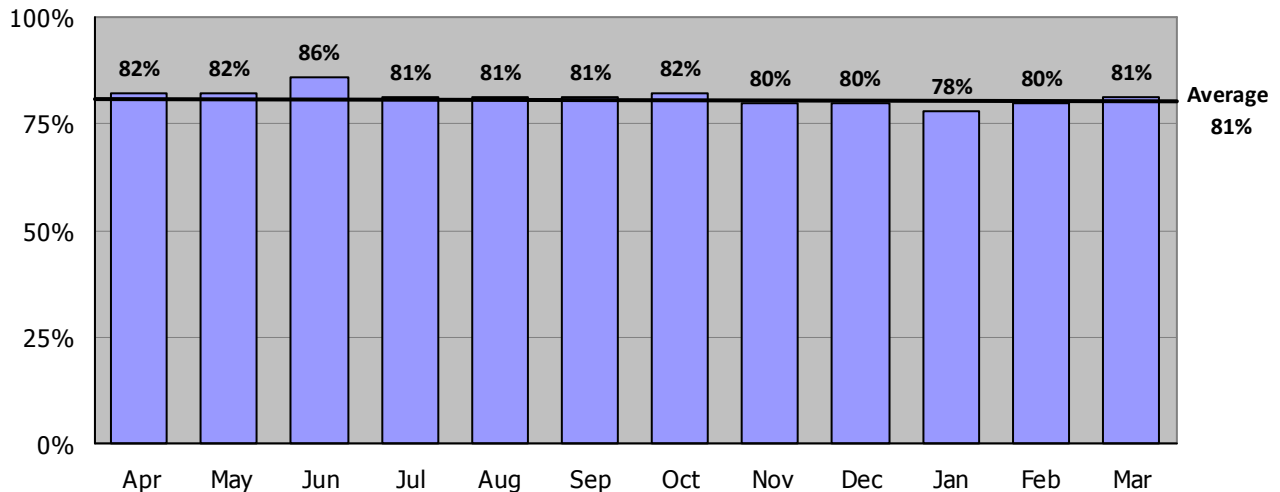
**Nursing Care Hours per Patient Day: April 2009 - March 2010**

The following graph shows the average number of direct nursing care hours provided per patient during a 24-hour period. Results are shown for each month, for care provided by registered nurses and by all nursing staff.



**Percent of Total Nursing Care Hours Provided by RNs: April 2009 - March 2010**

The following graph shows the percentage of total nursing hours provided by registered nurses, including the average for this unit.



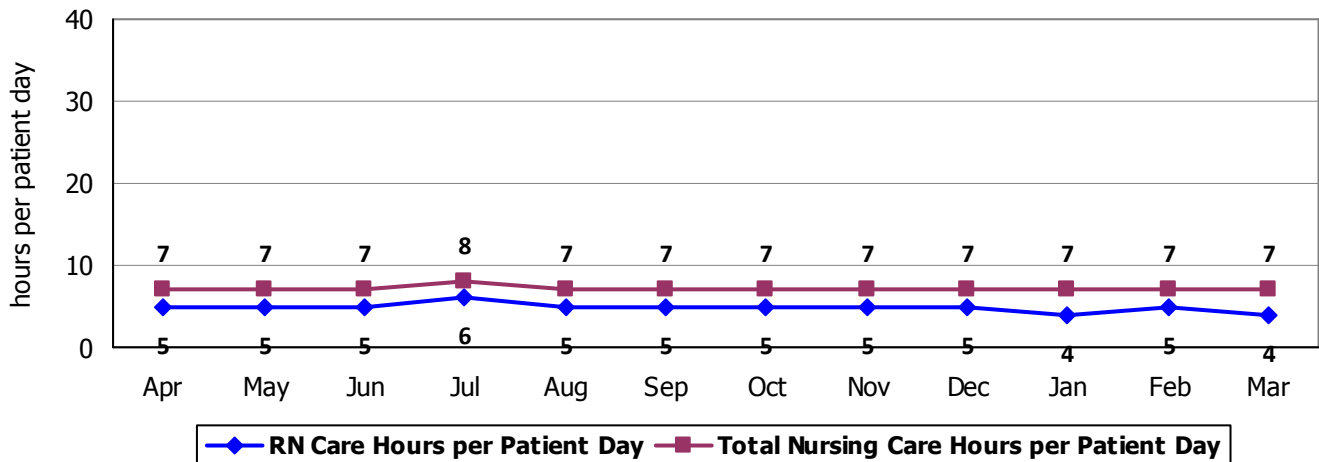
2010 Hospital Report Card Nurse Staffing Data  
**Central Vermont Medical Center**

**CENTRAL VERMONT MEDICAL CENTER – PSYCHIATRIC UNIT**

The Psychiatric Inpatient Unit at Central Vermont Medical Center has 14 licensed beds and cares for adult patients. Types of services provided in this setting include short-term, secure, inpatient care for individuals with a mental health diagnosis, substance abuse disorder, or both.

**Nursing Care Hours per Patient Day: April 2009 - March 2010**

The following graph shows the average number of direct nursing care hours provided per patient during a 24-hour period. Results are shown for each month, for care provided by registered nurses and by all nursing staff.



**Percent of Total Nursing Care Hours Provided by RNs: April 2009 - March 2010**

The following graph shows the percentage of total nursing hours provided by registered nurses, including the average for this unit.

