

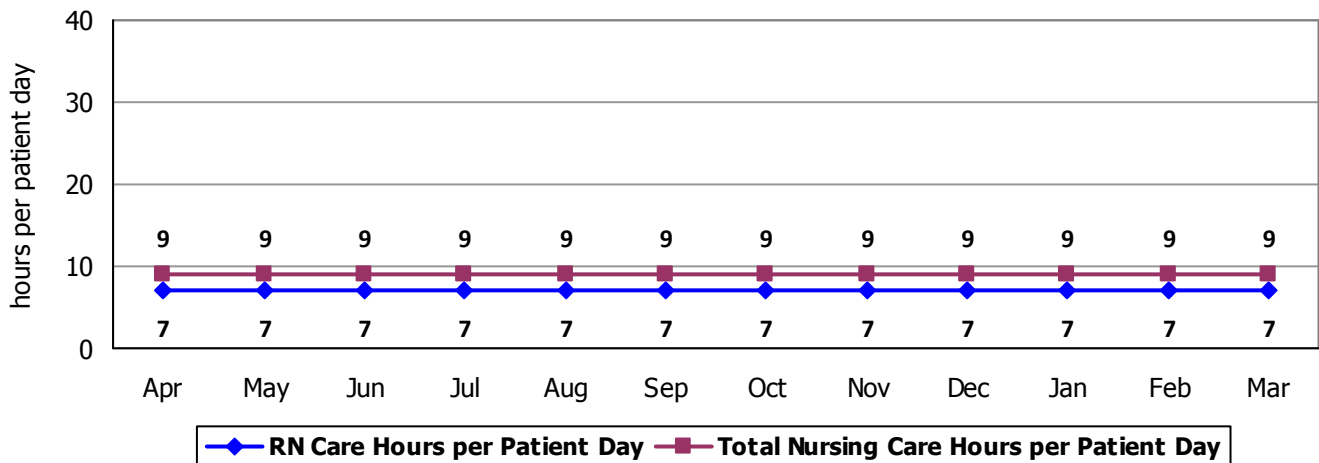
2010 Hospital Report Card Nurse Staffing Data  
**Fletcher Allen Health Care**

**FLETCHER ALLEN HEALTH CARE – MEDICAL/SURGICAL UNITS**

The Adult Medical/Surgical Units at Fletcher Allen Health Care have 228 licensed beds. Types of services provided in this setting may include: care of people with general medical and surgical problems; heart monitoring; end-of-life care; care of people with cancer; orthopedic care; and rehabilitative care.

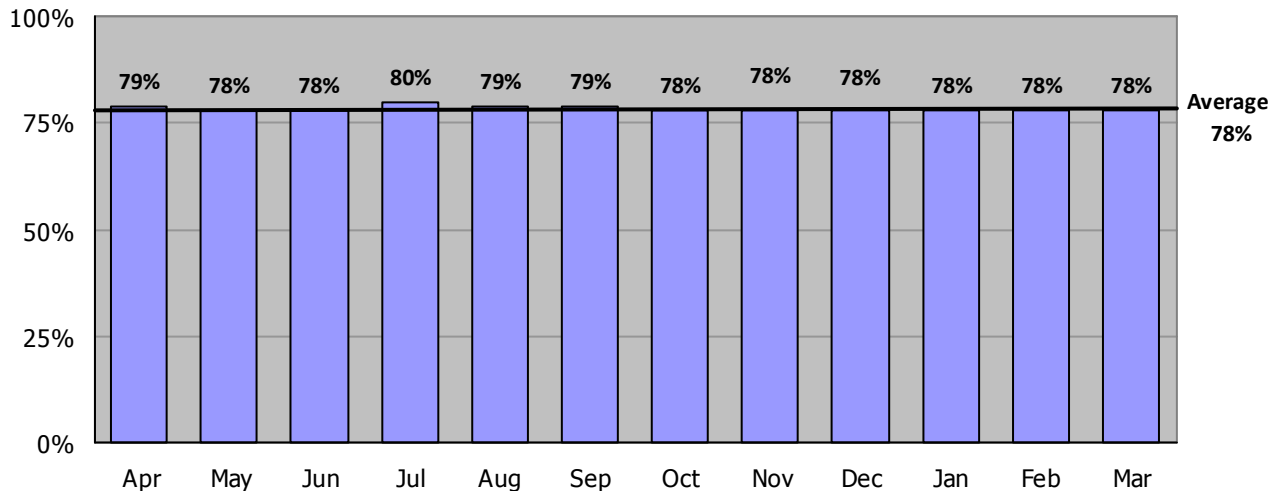
**Nursing Care Hours per Patient Day: April 2009 - March 2010**

The following graph shows the average number of direct nursing care hours provided per patient during a 24-hour period. Results are shown for each month, for care provided by registered nurses and by all nursing staff.



**Percent of Total Nursing Care Hours Provided by RNs: April 2009 - March 2010**

The following graph shows the percentage of total nursing hours provided by registered nurses, including the average for this unit.



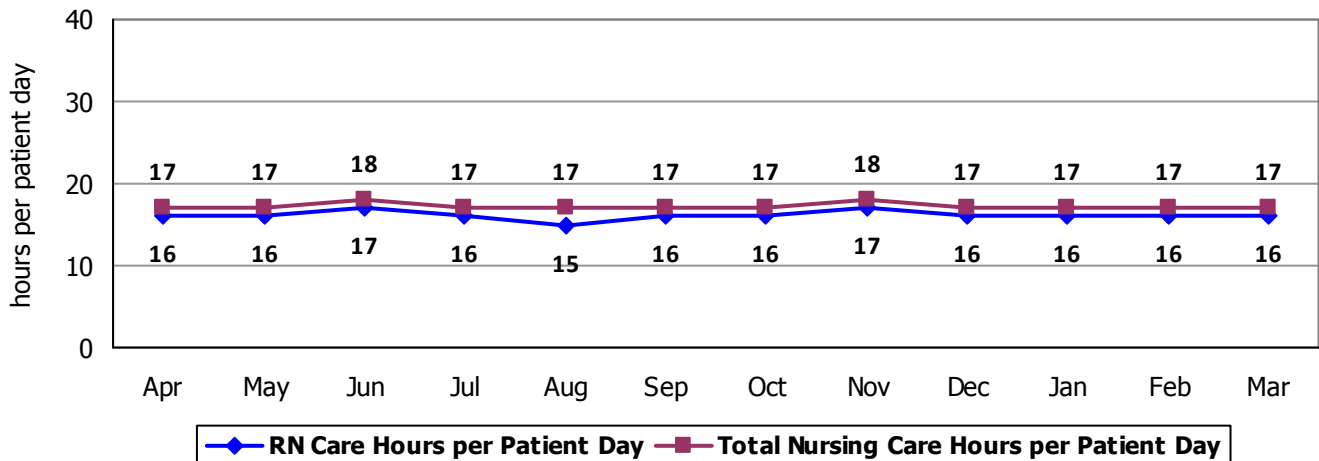
2010 Hospital Report Card Nurse Staffing Data  
**Fletcher Allen Health Care**

**FLETCHER ALLEN HEALTH CARE – INTENSIVE CARE UNIT**

The Intensive Care Units at Fletcher Allen Health Care have 46 licensed beds and care for patients of all ages. Types of services provided in this setting include care of people with, or at risk of developing, life-threatening problems.

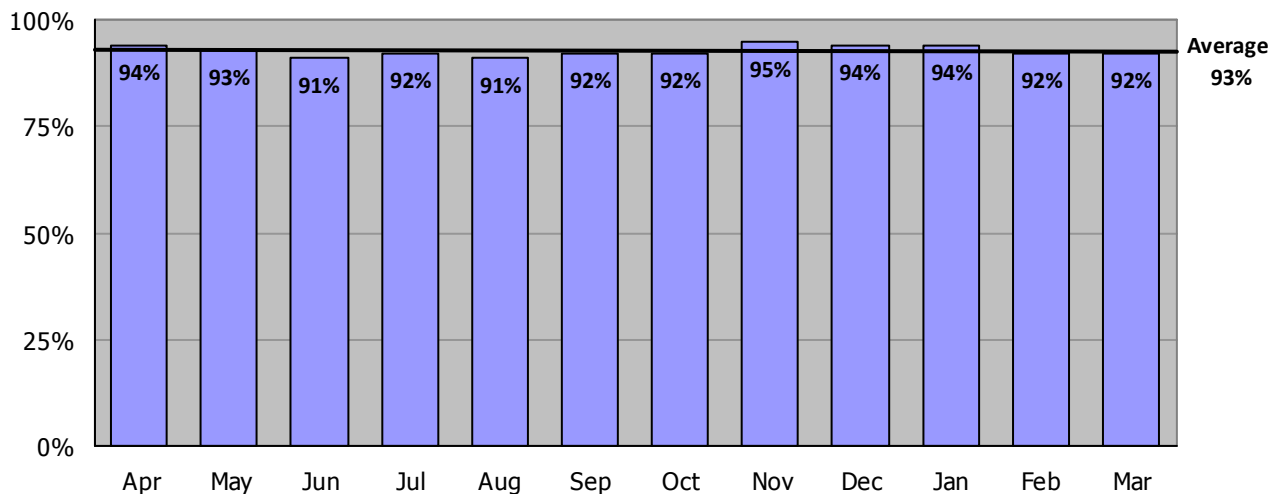
**Nursing Care Hours per Patient Day: April 2009 - March 2010**

The following graph shows the average number of direct nursing care hours provided per patient during a 24-hour period. Results are shown for each month, for care provided by registered nurses and by all nursing staff.



**Percent of Total Nursing Care Hours Provided by RNs: April 2009 - March 2010**

The following graph shows the percentage of total nursing hours provided by registered nurses, including the average for this unit.



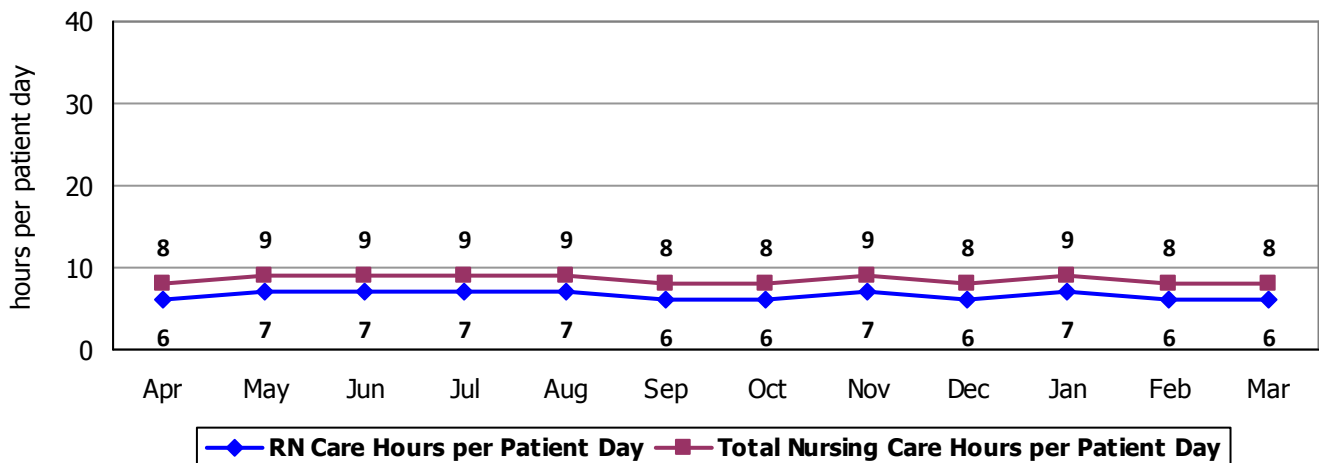
2010 Hospital Report Card Nurse Staffing Data  
**Fletcher Allen Health Care**

**FLETCHER ALLEN HEALTH CARE – OPEN PSYCHIATRIC UNIT**

The open Inpatient Psychiatric Unit at Fletcher Allen Health Care has 12 beds and cares for adult patients. Types of services provided in this setting include short-term, secure, inpatient care for individuals with a mental health diagnosis, substance abuse disorder, or both.

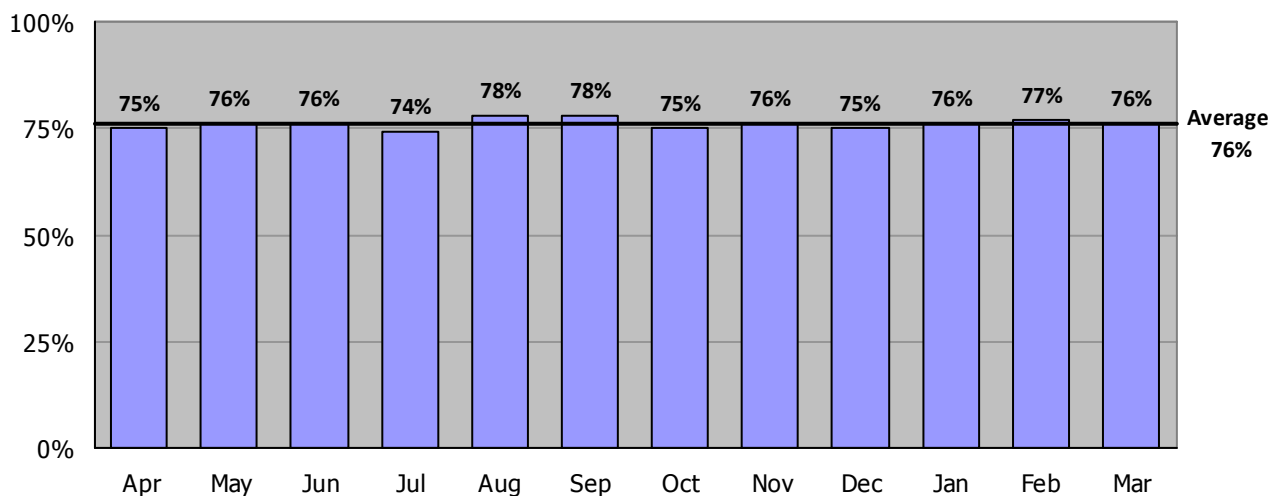
**Nursing Care Hours per Patient Day: April 2009 - March 2010**

The following graph shows the average number of direct nursing care hours provided per patient during a 24-hour period. Results are shown for each month, for care provided by registered nurses and by all nursing staff.



**Percent of Total Nursing Care Hours Provided by RNs: April 2009 - March 2010**

The following graph shows the percentage of total nursing hours provided by registered nurses, including the average for this unit.



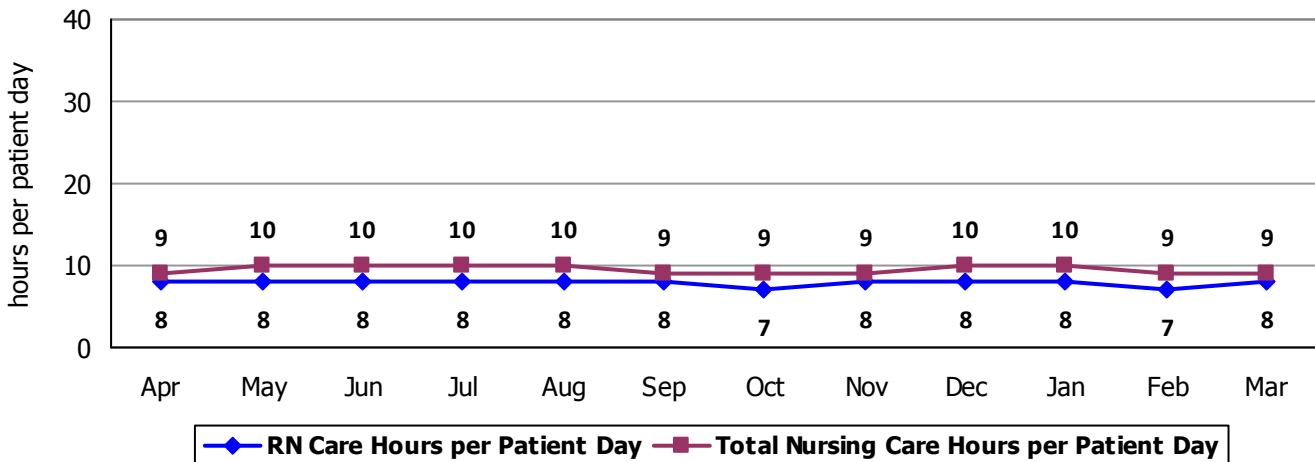
2010 Hospital Report Card Nurse Staffing Data  
**Fletcher Allen Health Care**

**FLETCHER ALLEN HEALTH CARE – SECURE PSYCHIATRIC UNIT**

The secure Inpatient Psychiatric Unit at Fletcher Allen Health Care has 16 licensed beds and cares for adult patients. Types of services provided in this setting include short-term, secure, inpatient care for individuals with a mental health diagnosis, substance abuse disorder, or both. Patients receiving care on the secure unit have higher acuity and generally require more intense observation and nursing care.

**Nursing Care Hours per Patient Day: April 2009 - March 2010**

The following graph shows the average number of direct nursing care hours provided per patient during a 24-hour period. Results are shown for each month, for care provided by registered nurses and by all nursing staff.



**Percent of Total Nursing Care Hours Provided by RNs: April 2009 - March 2010**

The following graph shows the percentage of total nursing hours provided by registered nurses, including the average for this unit.

