

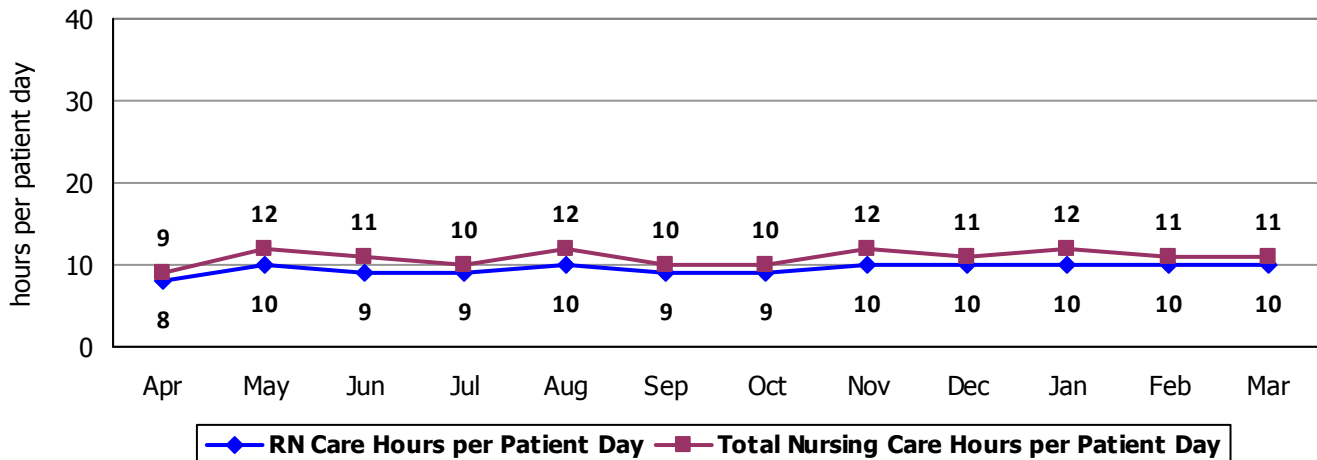
2010 Hospital Report Card Nurse Staffing Data
Northeastern Vermont Regional Hospital

NORTHEASTERN VERMONT REGIONAL HOSPITAL- MEDICAL/SURGICAL UNIT

The Medical/Surgical Unit at Northeastern Vermont Hospital has 18 licensed beds and cares for patients of all ages. Types of services provided in this setting may include: care of people with general medical and surgical problems; heart monitoring; end-of-life care; and rehabilitative care. Short term care for people who cannot manage independently in their home (Swing Bed Patients) is also provided.

Nursing Care Hours per Patient Day: April 2009 - March 2010

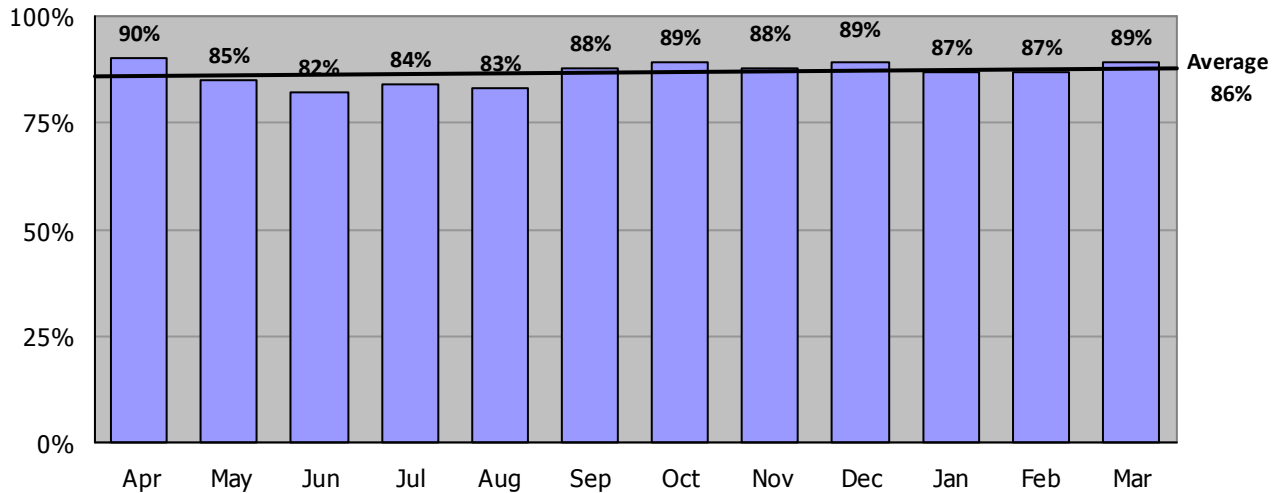
The following graph shows the average number of direct nursing care hours provided per patient during a 24-hour period. Results are shown for each month, for care provided by registered nurses and by all nursing staff.



Percent of Total Nursing Care Hours Provided by RNs: April 2009 - March 2010

The following graph shows the percentage of total nursing hours provided by registered nurses, including the average for this unit.

2010 Hospital Report Card Nurse Staffing Data Northeastern Vermont Regional Hospital

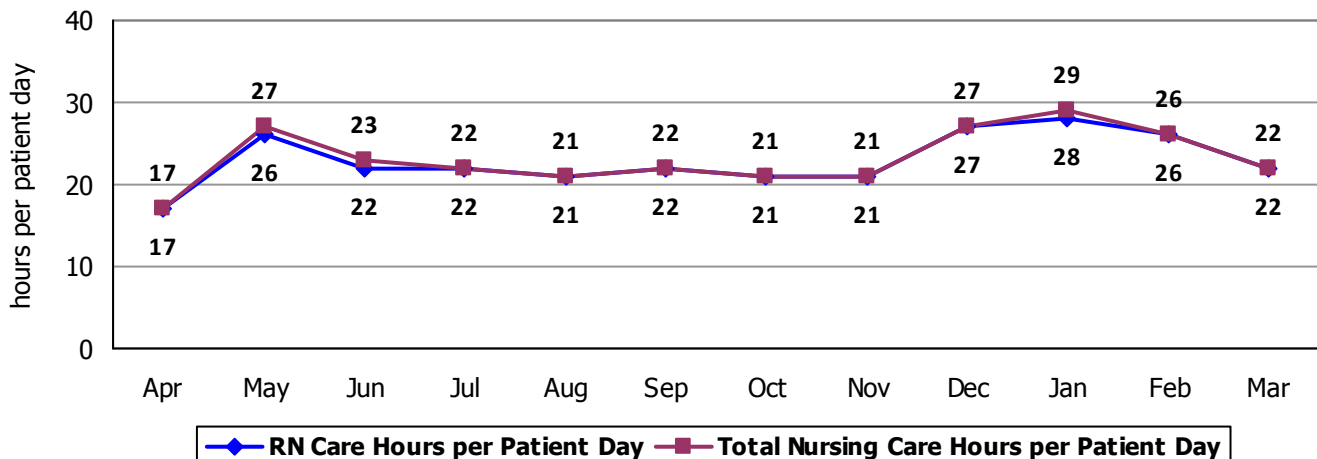


NORTHEASTERN VERMONT REGIONAL HOSPITAL – SPECIAL CARE UNIT

The Special Care Unit at Northeastern Vermont Hospital has 4 licensed beds and cares for patients of all ages. Types of services provided in this setting include care of people with, or at risk of developing, life-threatening problems.

Nursing Care Hours per Patient Day: April 2009 - March 2010

The following graph shows the average number of direct nursing care hours provided per patient during a 24-hour period. Results are shown for each month, for care provided by registered nurses and by all nursing staff.



Percent of Total Nursing Care Hours Provided by RNs: April 2009 - March 2010

The following graph shows the percentage of total nursing hours provided by registered nurses, including the average for this unit.

2010 Hospital Report Card Nurse Staffing Data
Northeastern Vermont Regional Hospital

