

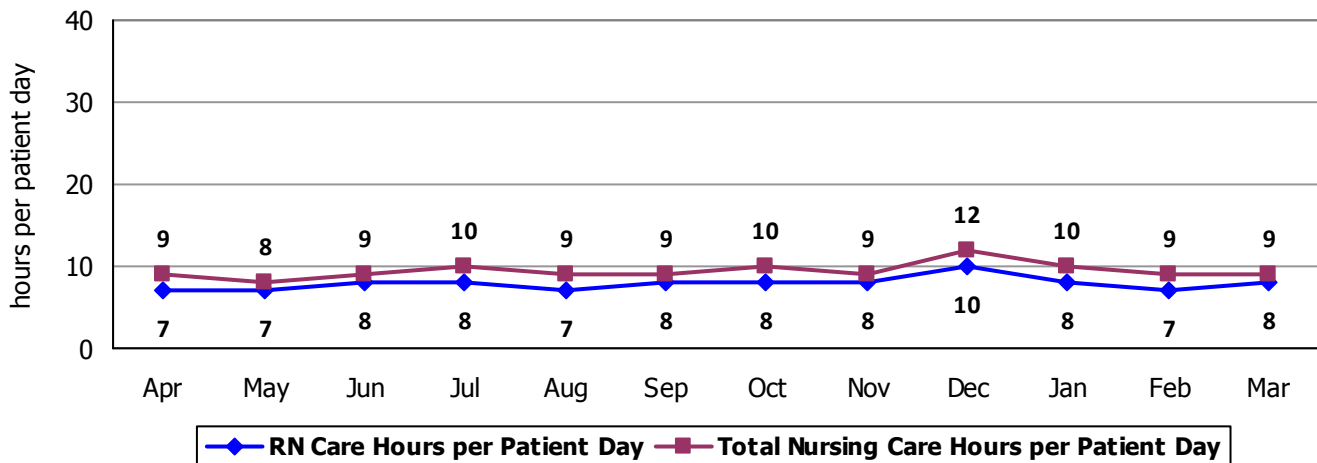
2010 Hospital Report Card Nurse Staffing Data
Springfield Hospital

SPRINGFIELD HOSPITAL – MEDICAL/SURGICAL UNIT

The Medical/Surgical Unit at Springfield Hospital has 25 licensed beds and cares for patients of all ages. Types of services provided in this setting may include: care of people with general medical and surgical problems; heart monitoring; end-of-life care; and rehabilitative care.

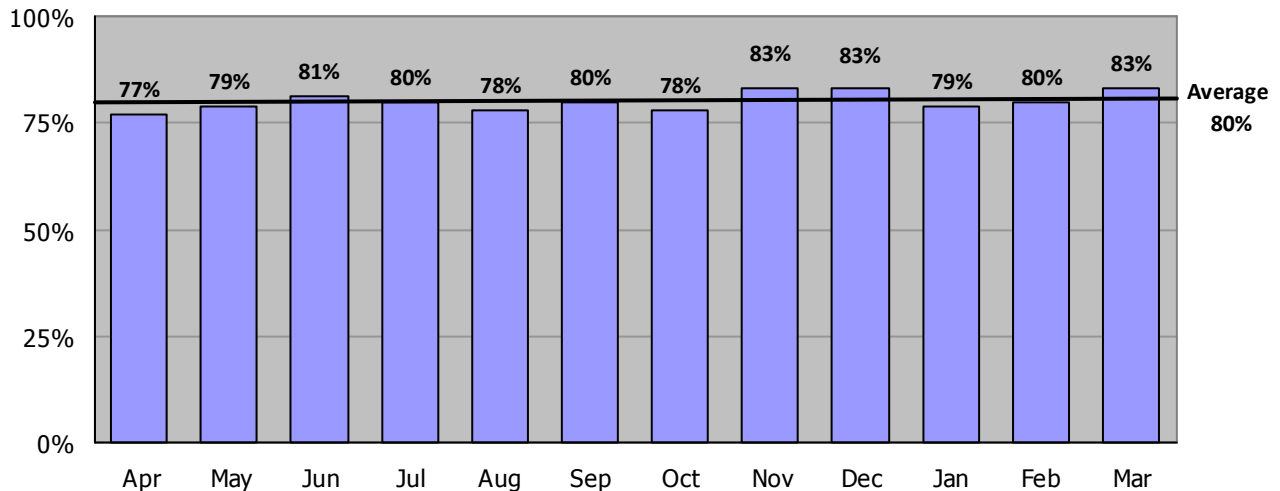
Nursing Care Hours per Patient Day: April 2009 - March 2010

The following graph shows the average number of direct nursing care hours provided per patient during a 24-hour period. Results are shown for each month, for care provided by registered nurses and by all nursing staff.



Percent of Total Nursing Care Hours Provided by RNs: April 2009 - March 2010

The following graph shows the percentage of total nursing hours provided by registered nurses, including the average for this unit.



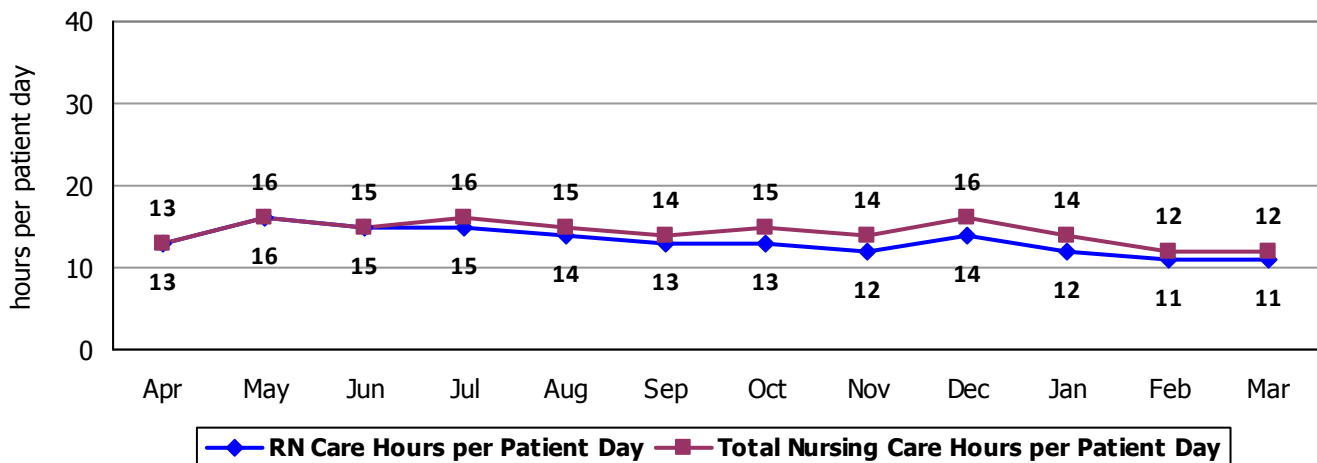
2010 Hospital Report Card Nurse Staffing Data
Springfield Hospital

SPRINGFIELD HOSPITAL – INTENSIVE CARE UNIT

The Intensive Care/Telemetry Unit at Springfield Hospital has 5 licensed intensive care beds, and 3 licensed telemetry beds. Types of services provided in the Intensive Care setting include care of people with, or at risk of developing, life-threatening problems. Patients receiving care on the telemetry unit need constant heart monitoring.

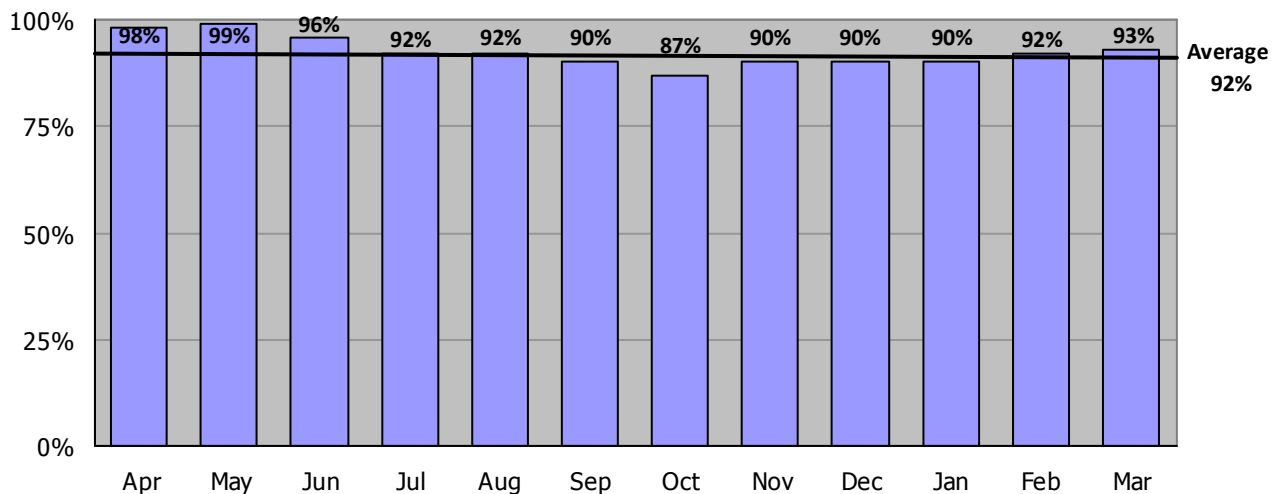
Nursing Care Hours per Patient Day: April 2009 - March 2010

The following graph shows the average number of direct nursing care hours provided per patient during a 24-hour period. Results are shown for each month, for care provided by registered nurses and by all nursing staff.



Percent of Total Nursing Care Hours Provided by RNs: April 2009 - March 2010

The following graph shows the percentage of total nursing hours provided by registered nurses, including the average for this unit.



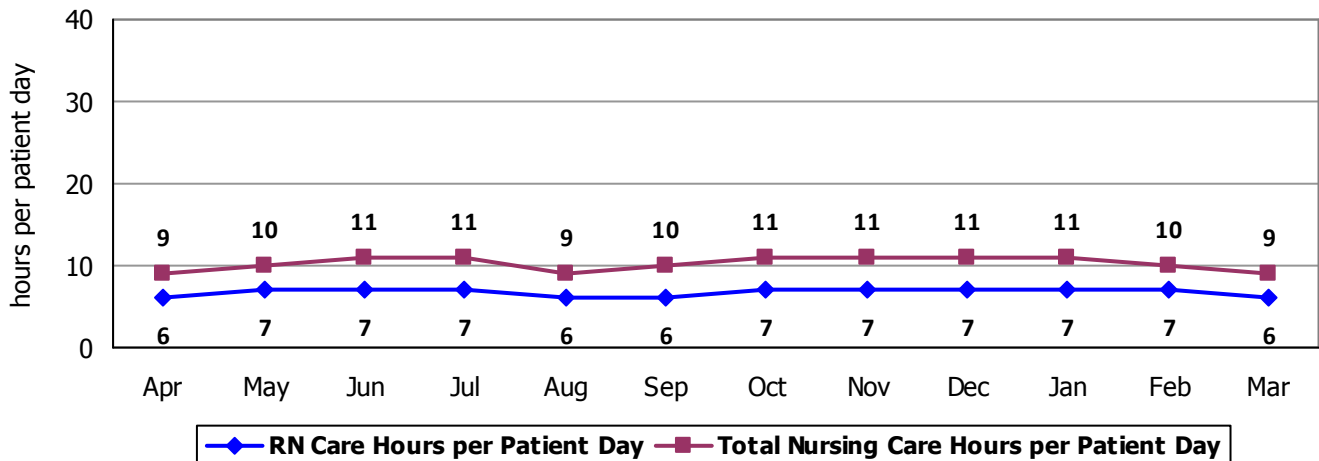
2010 Hospital Report Card Nurse Staffing Data
Springfield Hospital

SPRINGFIELD HOSPITAL – PSYCHIATRIC UNIT (WINDHAM CENTER)

The Windham Center for Psychiatric Care at Springfield Hospital has 10 licensed beds. Types of services provided in this setting include short-term, secure, inpatient care for individuals with a mental health diagnosis, substance abuse disorder, or both.

Nursing Care Hours per Patient Day: April 2009 - March 2010

The following graph shows the average number of direct nursing care hours provided per patient during a 24-hour period. Results are shown for each month, for care provided by registered nurses and by all nursing staff.



Percent of Total Nursing Care Hours Provided by RNs: April 2009 - March 2010

The following graph shows the percentage of total nursing hours provided by registered nurses, including the average for this unit.

