

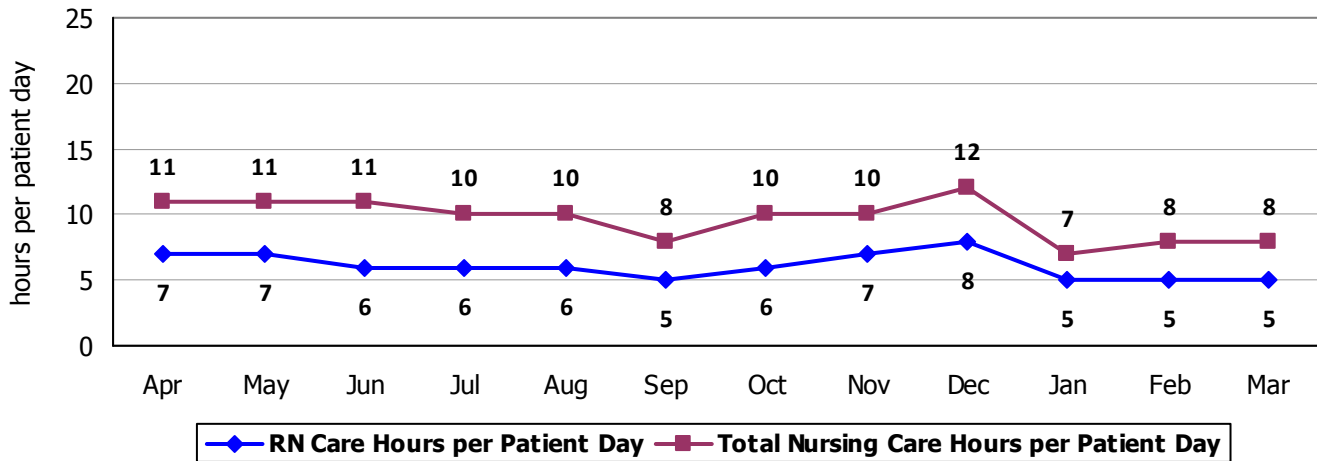
2010 Hospital Report Card Nurse Staffing Data
Veterans Affairs Medical Center

VETERANS AFFAIRS MEDICAL CENTER – MEDICAL/SURGICAL UNITS

The Medical/Surgical units at the White River Junction Veterans Affairs Medical Center have a total of 43 beds and care for adult patients, primarily male with emerging special populations of females as well as a younger population of both genders related to Operation Enduring and Iraqi Freedom. Types of services provided in this setting may include: care of people with general medical and surgical problems; heart monitoring; end-of-life care; rehabilitative care; case management; and care coordination.

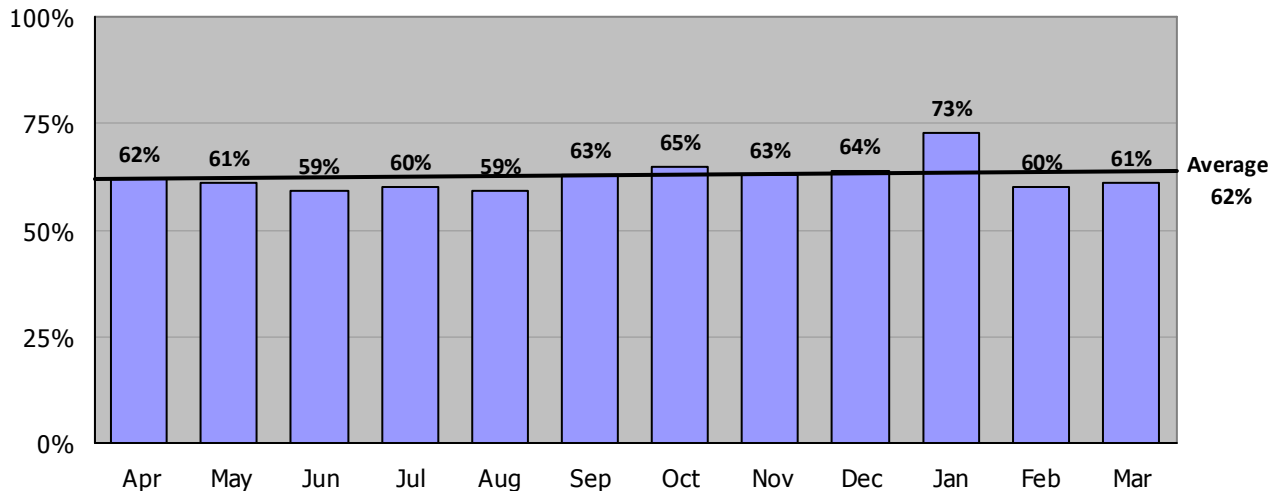
Nursing Care Hours per Patient Day: April 2009 - March 2010

The following graph shows the average number of direct nursing care hours provided per patient during a 24-hour period. Results are shown for each month for care provided by registered nurses and by all nursing staff.



Percent of Total Nursing Care Hours Provided by RNs: April 2009 - March 2010

The following graph shows the percentage of total nursing hours provided by registered nurses, including the average for this unit.



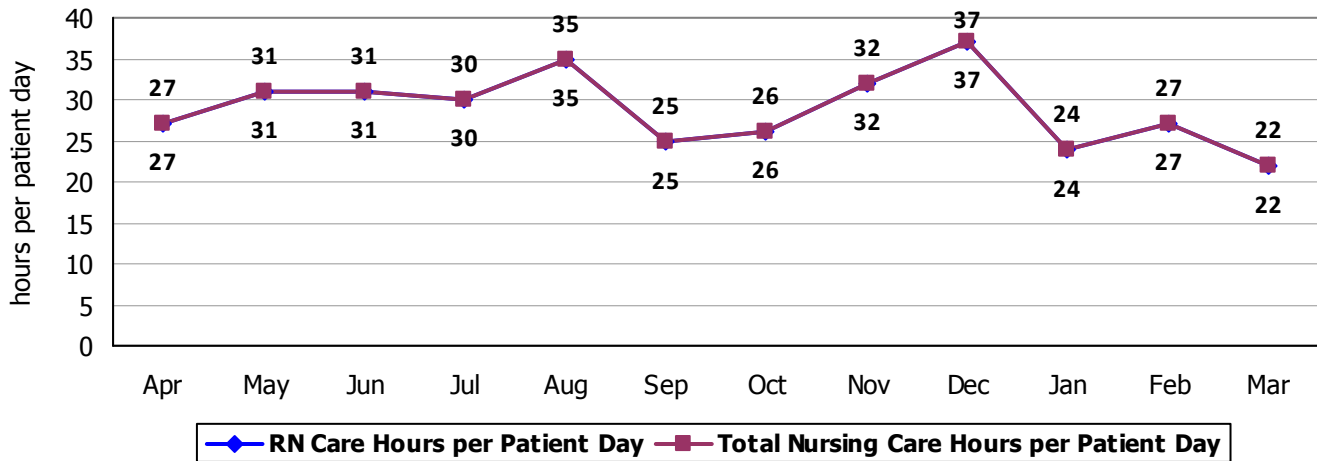
2010 Hospital Report Card Nurse Staffing Data
Veterans Affairs Medical Center

VETERANS AFFAIRS MEDICAL CENTER – INTENSIVE CARE UNIT

The Intensive Care Unit at the White River Junction Veterans Affairs Medical Center has 7 beds and cares for adult patients, primarily male with emerging special populations of females as well as a younger population of both genders related to Operation Enduring and Iraqi Freedom. Types of services provided in this setting include care of people with, or at risk of developing, life-threatening problems.

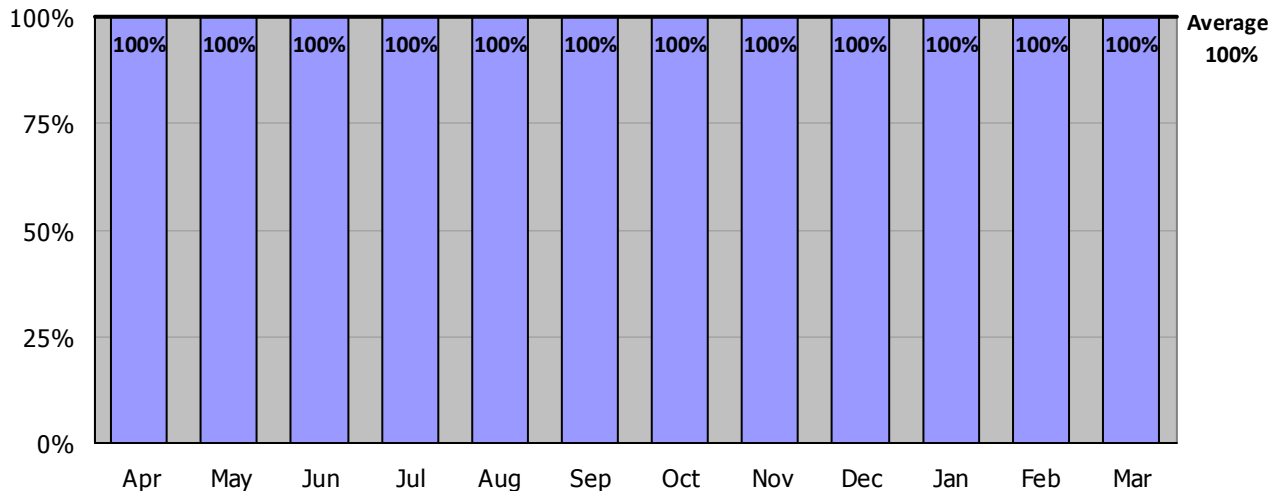
Nursing Care Hours per Patient Day: April 2009 - March 2010

The following graph shows the average number of direct nursing care hours provided per patient during a 24-hour period. Results are shown for each month for care provided by registered nurses and by all nursing staff.



Percent of Total Nursing Care Hours Provided by RNs: April 2009 - March 2010

The following graph shows the percentage of total nursing hours provided by registered nurses, including the average for this unit.



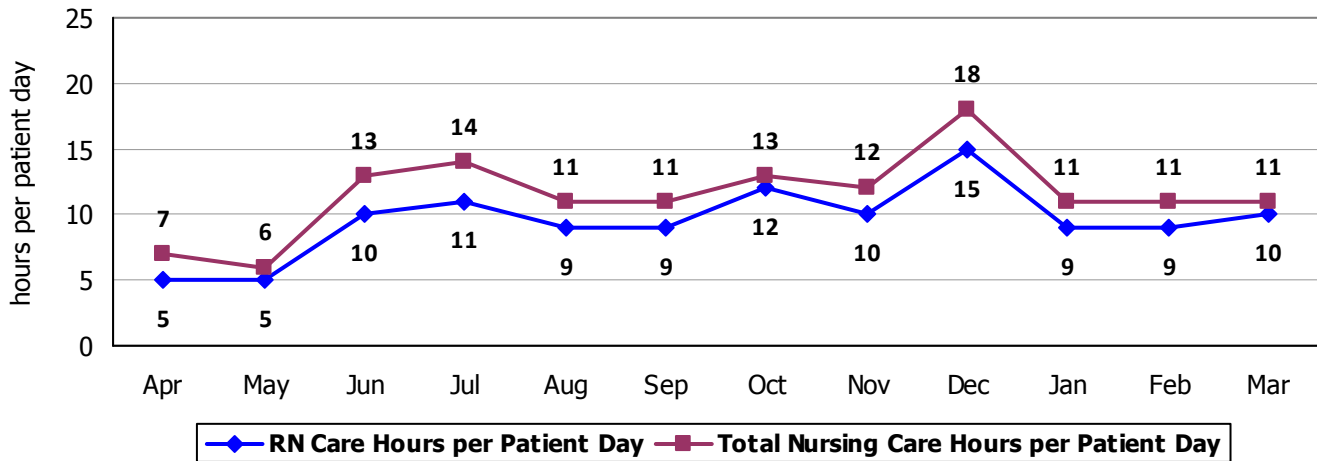
2010 Hospital Report Card Nurse Staffing Data
Veterans Affairs Medical Center

VETERANS AFFAIRS MEDICAL CENTER – PSYCHIATRIC CARE UNIT

The Psychiatric-Mental Health Unit at the White River Junction Veterans Affairs Medical Center has 10 licensed beds and cares for adult patients, primarily male with emerging special populations of females as well as a younger population of both genders related to Operation Enduring and Iraqi Freedom. Types of services provided in this setting include short-term inpatient care of individuals with mental health diagnosis, substance abuse disorder, post traumatic stress disorder and dual diagnosis; case management; and care coordination.

Nursing Care Hours per Patient Day: April 2009 - March 2010

The following graph shows the average number of direct nursing care hours provided per patient during a 24-hour period. Results are shown for each month for care provided by registered nurses and by all nursing staff.



Percent of Total Nursing Care Hours Provided by RNs: April 2009 - March 2010

The following graph shows the percentage of total nursing hours provided by registered nurses, including the average for this unit.

